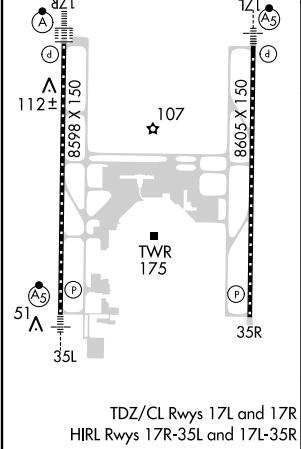
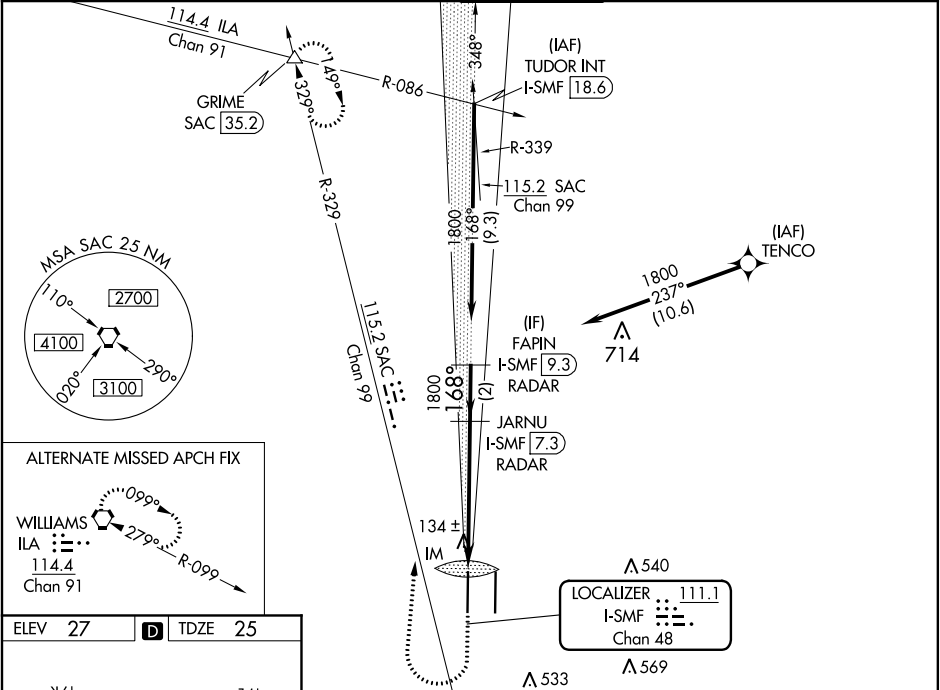


LOC/DME I-SMF 111.1 Chan 48	APP CRS 168°	Rwy Idg 8598 TDZE 25 Apt Elev 27	ILS RWY 17R (CAT II & III) SACRAMENTO INTL (SMF')	
---	------------------------	---	--	--

RNAV 1-GPS or RADAR required for procedure entry. From TENCO: RNAV 1-GPS required. DME or RADAR required.		ALSIF-2 	MISSED APPROACH: Climb to 500 then climbing right turn to 2000 on heading 350° and SAC VORTAC R-329 to GRIME INT/SAC 35.2 DME and hold.
Simultaneous approach authorized.			

D-ATIS 126.75	NORCAL APP CON 125.4 259.1 (W-NE) 125.25 257.9 (SW) 127.4 317.5 (E-SE)		CAPITOL TOWER 125.7 256.7	GND CON 121.7 256.7	CLNC DEL 121.1 256.7	CPDLC
-------------------------	--	--	-------------------------------------	-------------------------------	--------------------------------	-------



500 2000 hdg 350°		SAC R-329	GRIME	VGS1 and ILS glidepath not coincident (VGS1 Angle 3.00/TCH 72).	
JARNU I-SMF 7.3 RADAR		1800	FAPIN I-SMF 9.3 RADAR		1800
IM 122		168°	GS 3.00° TCH 57		1800
1074'		5.4 NM	2 NM		
CATEGORY	A	B	C	D	
S-ILS 17R	CAT II RA 103/12 100 DA 125				
S-ILS 17R	CAT III RVR 06				

CATEGORY II & III ILS - SPECIAL AIRCREW
& AIRCRAFT CERTIFICATION REQUIRED