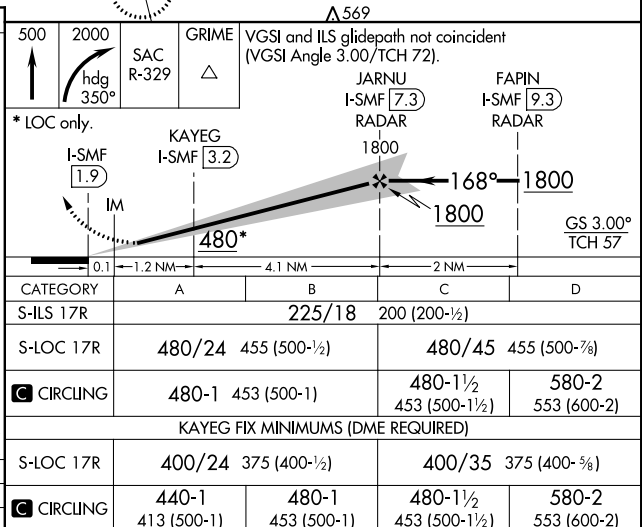
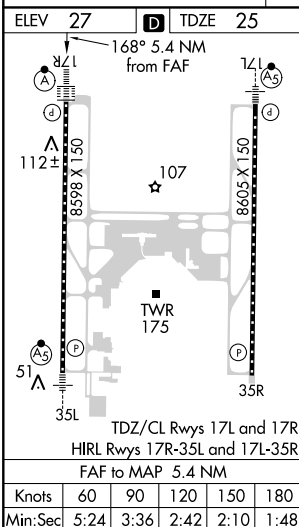
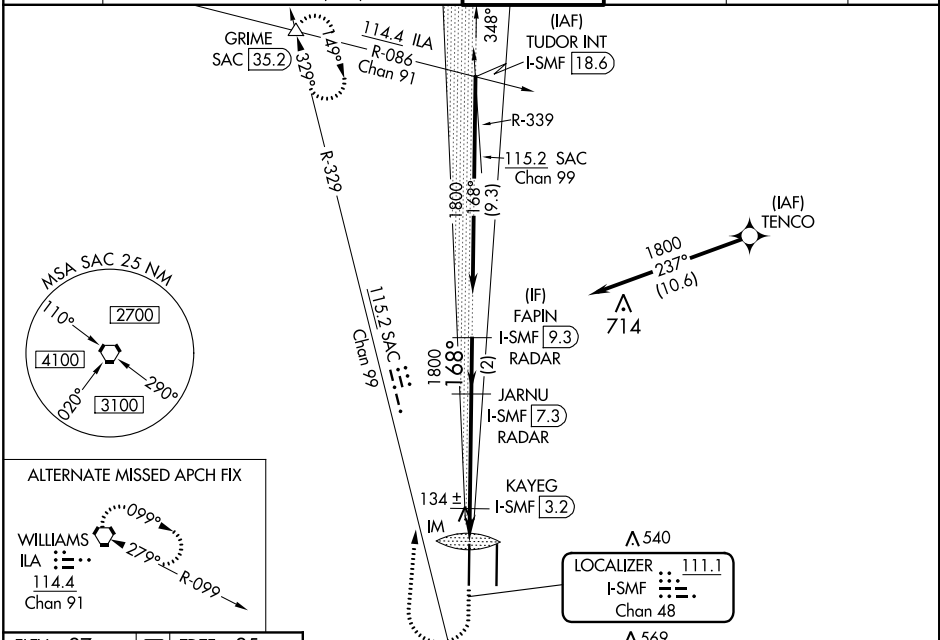


ILS or LOC RWY 17R
SACRAMENTO INTL (SMF)

MISSED APPROACH: Climb to 500 then climbing right turn to 2000 on heading 350° and SAC VORTAC R-329 to GRIME INT/SAC 35.2 DME and hold.

D-ATIS 126.75	NORCAL APP CON 125.4 259.1 (W-NE) 125.25 257.9 (SW) 127.4 317.5 (E-SE)				CAPITOL TOWER 125.7 256.7	GND CON 121.7 256.7	CLNC DEL 121.1 256.7	CPDLC
------------------	--	--	--	--	------------------------------	------------------------	-------------------------	-------



SW-2, 31 DEC 2020 to 28 JAN 2021