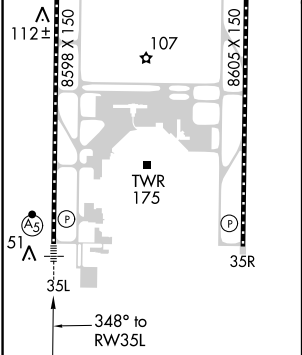
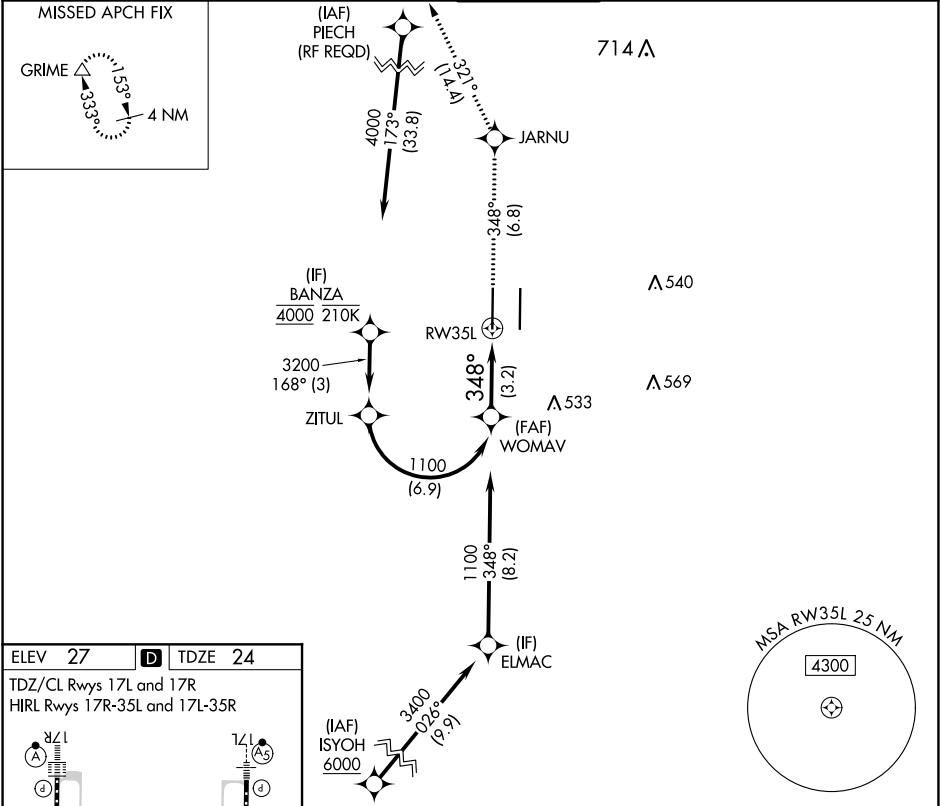


APP CRS	Rwy Idg	8598
348°	TDZE	24
	Apt Elev	27

RNAV (RNP) Z RWY 35L  
SACRAMENTO INTL (SMF<sup>7</sup>)

RNP AR APCH.				MALSR	MISSED APPROACH: Climb to 2000 on track 348° to JARNU and track 321° to GRIME and hold.		
▼ For uncompensated Baro-VNAV systems, procedure NA below -4°C or above 54°C. For inop ALS, increase RNP 0.30 all Cats visibility to RVR 5000.							
D-ATIS	NORCAL APP CON			CAPITOL TOWER	GND CON	CLNC DEL	CPDLC
126.75	125.4	259.1 (W-NE)	125.25 257.9 (SW)	125.7 256.7	121.7 256.7	121.1 256.7	
			127.4 317.5 (E-SE)				



VGSi and RNAV glidepath not coincident (VGSi Angle 3.00/TCH 76).				2000 ↑ tr 348°	JARNU ✦	tr 321°	GRIME △
WOMAV 1100				See planview for multiple IF locations.			
1100				RW35L			
GP 3.00° TCH 59				3.2 NM			
CATEGORY	A	B	C	D			
RNP 0.30 DA	327/26 303 (300-½)						
AUTHORIZATION REQUIRED							