

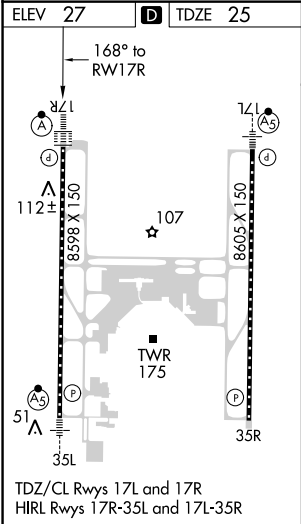
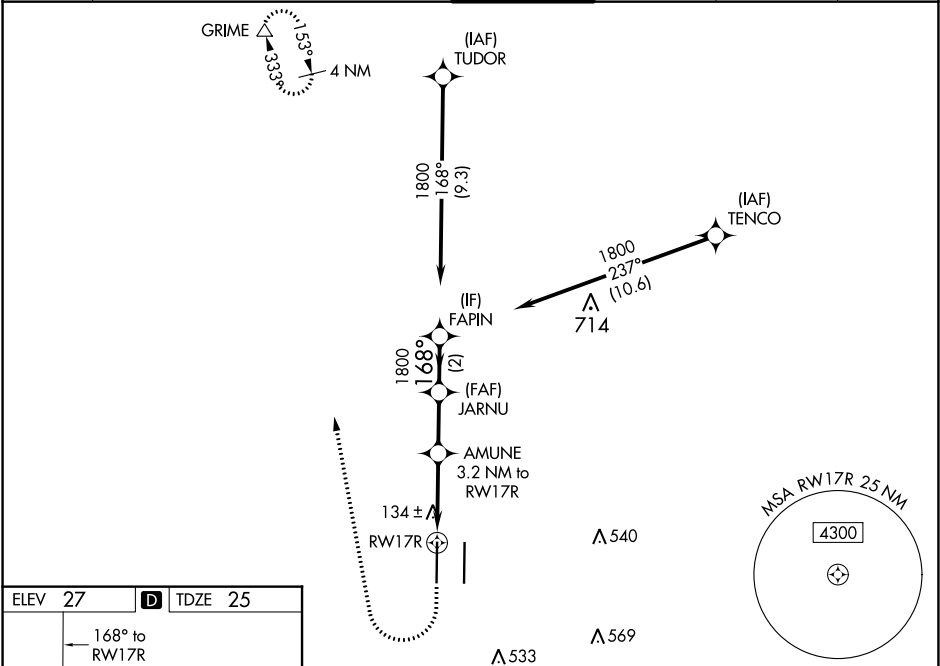
WAAS CH <b>65728</b> <b>W17A</b>	APP CRS <b>168°</b>	Rwy Idg <b>8598</b> TDZE <b>25</b> Apt Elev <b>27</b>
--	------------------------	---

RNAV (GPS) Y RWY 17R

SACRAMENTO INTL (SMF)

RNP APCH. Circling NA east of Rwy 17R-35L. Simultaneous approach authorized. Use of FD or AP required during simultaneous operations. LNAV procedure NA during simultaneous operations. For uncompensated Baro-VNAV systems, LNAV/VNAV NA below -4°C or above 54°C. For inop ALS, increase LNAV/VNAV all Cats visibility to RVR 4500 and LNAV all Cats visibility to RVR 5500.	ALS-F-2 	MISSED APPROACH: Climb to 500 then climbing right turn to 2000 direct GRIME and hold.
---	-------------	---

D-ATIS <b>126.75</b>	NORCAL APP CON <b>125.4 259.1</b> (W-NE) <b>125.25 257.9</b> (SW) <b>127.4 317.5</b> (E-SE)	CAPITOL TOWER <b>125.7 256.7</b>	GND CON <b>121.7 256.7</b>	CLNC DEL <b>121.1 256.7</b>	CPDLC
-------------------------	---	-------------------------------------	-------------------------------	--------------------------------	-------



500	2000	GRIME △	VGSI and RNAV glidepath not coincident (VGSI Angle 3.00/TCH 72).			
* LNAV only		* 1 NM to RW17R	AMUNE 3.2 NM to RW17R	JARNU 1800	FAPIN 1800	
RW17R		1100*	168°	1800	GP 3.00° TCH 57	
1 NM		2.2 NM	2.2 NM	2 NM		
CATEGORY	A	B	C	D		
LPV DA	225/18 200 (200-½)					
LNAV/ VNAV DA	323/24 298 (300-½)					
LNAV MDA	400/24 375 (400-½)			400/35 375 (400-¾)		
<b>C</b> CIRCLING	440-1 413 (500-1)	480-1 453 (500-1)	480-1½ 453 (500-1½)	580-2 553 (600-2)		

SW-2, 31 DEC 2020 to 28 JAN 2021

SW-2, 31 DEC 2020 to 28 JAN 2021