

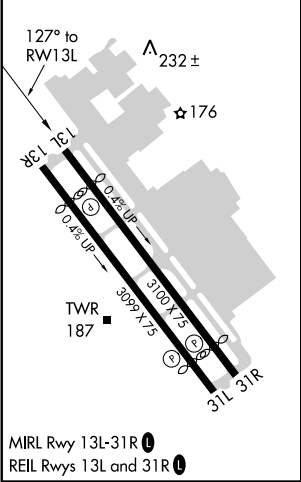
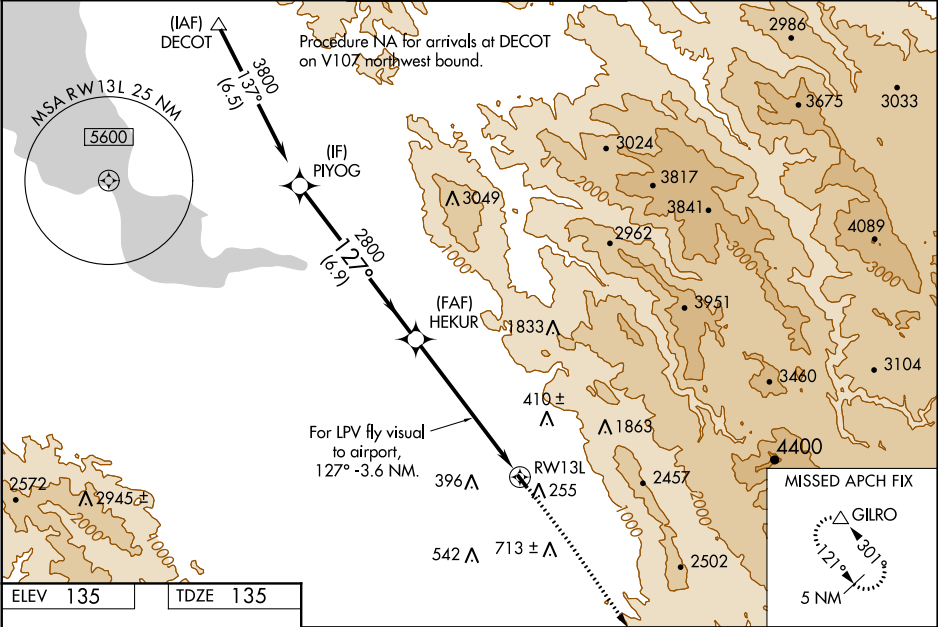
|  |                        |   |
|--|------------------------|---|
| WAAS<br>CH <b>82216</b><br><b>W13A</b> | APP CRS<br><b>127°</b> | Rwy Idg<br>TDZE <b>135</b><br>Apt Elev <b>135</b> |
|--|------------------------|---|

RNAV (GPS) RWY 13L

REID-HILLVIEW OF SANTA CLARA COUNTY (RHW)

|           |  |   |  |
|-----------|--|---|--|
| RNP APCH. |  | MISSED APPROACH: Climb to 1900 then climbing right turn to 5000 direct GILRO and hold.<br>#Missed approach requires minimum climb of 300 feet per NM to 2800. |  |
| NA        | Circling Rwy 31L NA at night. Rwy 13L helicopter visibility reduction below ¾ SM NA. VDP NA with Norman Y Mineta San Jose Intl altimeter setting. When control tower closed, use Norman Y Mineta San Jose Intl altimeter setting and increase all DAs 25 feet and all MDAs 40 feet; increase LPV# visibility to 1¾ SM. Circling east of Rwy 13L-31R NA at night. |   |  |

|                      |                                       |   |                          |                         |
|----------------------|---------------------------------------|---|--------------------------|-------------------------|
| ATIS<br><b>125.2</b> | NORCAL APP CON<br><b>120.1 290.25</b> | REID-HILLVIEW TOWER ★<br>(Rwy 13L-31R) (Rwy 13R-31L)<br><b>119.8 (CTAF) 126.1</b> | GND CON<br><b>121.65</b> | UNICOM<br><b>122.95</b> |
|----------------------|---------------------------------------|---|--------------------------|-------------------------|



|           |                |                |   |                              |  |  |      |       |
|-----------|----------------|----------------|---|------------------------------|--|--|------|-------|
| PIYOG     |                | HEKUR          |   | * LNAV only.                 |  | 1900   | 5000 | GILRO |
| 3800      |                | 2800           |   | 127°                         |  | ↑  | ↷    | △     |
| GP 4.00°  |                | 2800           |   | For LPV fly visual to RWY13L |  | For LPV fly visual to airport, 127° -3.6 NM. |      |       |
| TCH 45    |                | 6.9 NM         |   | 4.2 NM                       |  | 2 NM   |      |       |
| CATEGORY  | A              | B              | C | D                            |  |  |      |       |
| LPV DA#   | 562-1¼         | 427 (500-1¼)   |   |                              |  | NA   |      |       |
| LPV DA    | 1708-3         | 1573 (1600-3)  |   |                              |  | NA   |      |       |
| LNAV MDA# | 1040-1¼        | 905 (1000-1¼)  |   |                              |  | NA   |      |       |
| LNAV MDA  | 1600-1¼        | 1600-1½        |   |                              |  | NA   |      |       |
|           | 1465 (1500-1¼) | 1465 (1500-1½) |   |                              |  | NA   |      |       |
| CIRCLING  | 1600-1¼        | 1600-1½        |   |                              |  | NA   |      |       |
|           | 1465 (1500-1¼) | 1465 (1500-1½) |   |                              |  | NA   |      |       |