

APP CRS
312°

Rwy Idg
TDZE
Apt Elev

2690
133
135

RNAV (GPS) Y RWY 31R

REID-HILLVIEW OF SANTA CLARA COUNTY (R.H.V.)

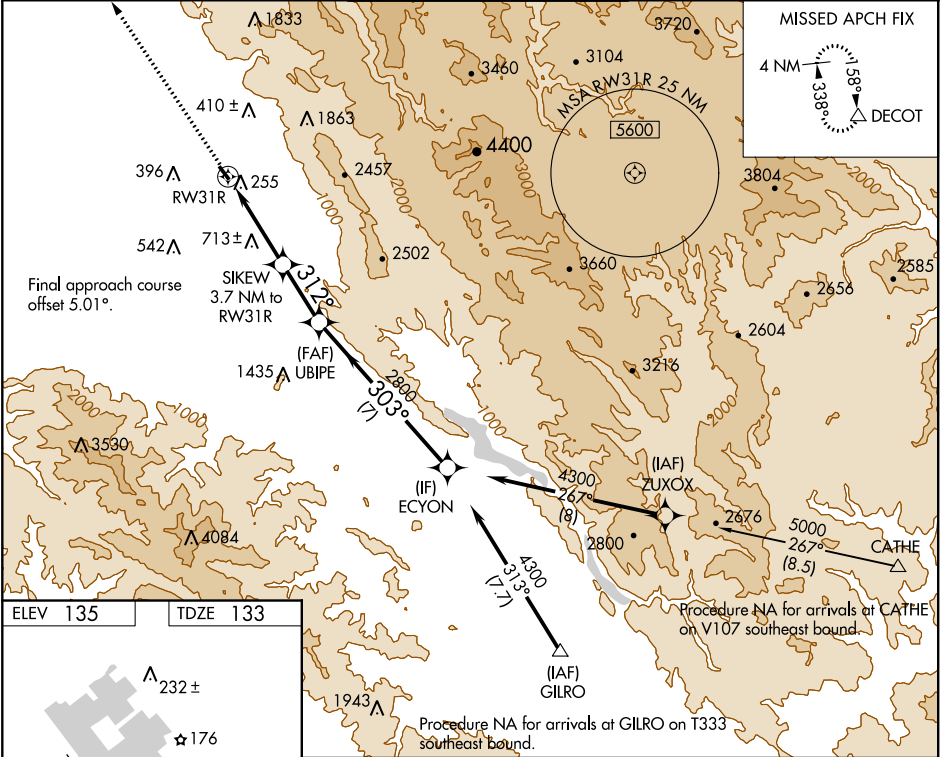
RNP APCH.

NA

Circling Rwy 31L NA at night. Rwy 31R helicopter visibility reduction below ¾ SM NA. VDP NA when using Norman Y Mineta San Jose Intl altimeter setting. Circling east of Rwy 13L-31R NA at night. When control tower closed, use Norman Y Mineta San Jose Intl altimeter setting and increase all MDAs 40 feet.

MISSED APPROACH: Climb to 4000 direct DECOT and hold.

ATIS 125.2	NORCAL APP CON 120.1 290.25	REID-HILLVIEW TOWER ★ (Rwy 13L-31R) (Rwy 13R-31L) 119.8 (CTAF) 126.1	GND CON 121.65	UNICOM 122.95
---------------	--------------------------------	--	-------------------	------------------



ELEV 135

TDZE 133

4000

DECOT

SIKEW
3.7 NM to
RWY31R

UBIPE

EYCON

4300

2800

1760

2.6 NM to
RWY31R

1.1 NM

2.5 NM

7 NM

312°

303°

4.00°

TCH 45

CATEGORY	A	B	C	D
LNAV MDA	1300-1¼ 1167 (1200-1¼)	1300-1½ 1167 (1200-1½)	NA	
CIRCLING	1300-1¼ 1165 (1200-1¼)	1300-1½ 1165 (1200-1½)	NA	