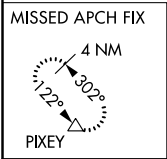
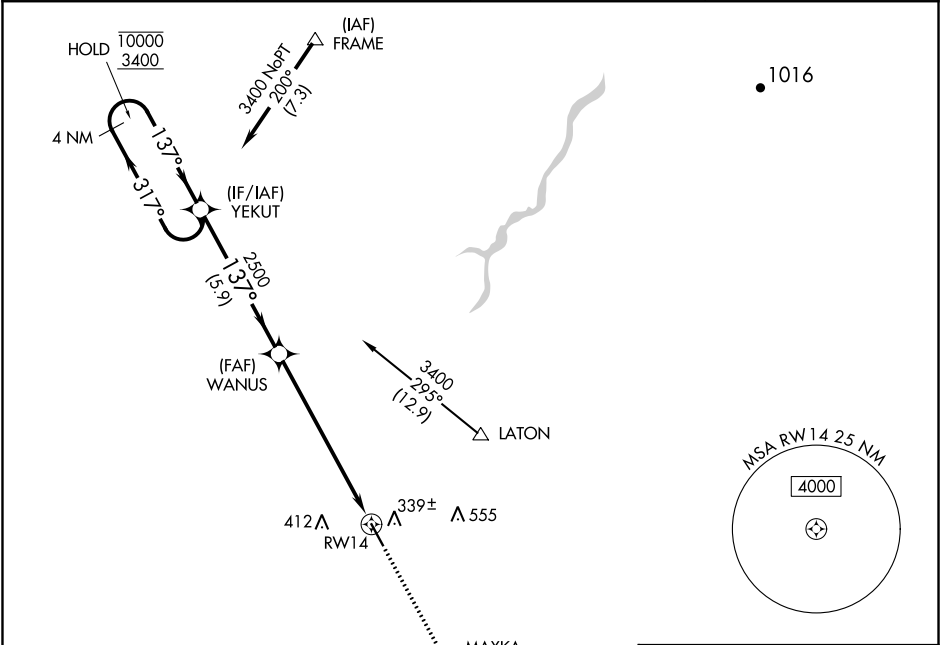


APP CRS	Rwy Idg	N/A
137°	TDZE	N/A
	Apt Elev	240

RNAV (GPS)-B
HANFORD MUNI (HJO)

RNP APCH:	MISSED APPROACH: Climb to 3100 direct MAXKA and on track 122° to PIXEY and hold.
▼ Circling Rwy 14 NA at night.	

ASOS 134.75	FRESNO APP CON 123.9	CLNC DEL 123.9	UNICOM 122.8 (CTAF) 0
----------------	-------------------------	-------------------	--------------------------



4 NM Holding Pattern	YEKUT	3100	MAXKA	tr 122°	PIXEY
10000 3400	← 317° → 137°	2500	3.00° TCH 45	5.9 NM	7 NM
CATEGORY	A	B	C	D	
CIRCLING	760-1	520 (600-1)	760-1½ 520 (600-1½)	NA	

