

APP CRS  
301°

Rwy Idg  
TDZE  
Apt Elev

7498  
4111  
4124

RNAV (RNP) RWY 30

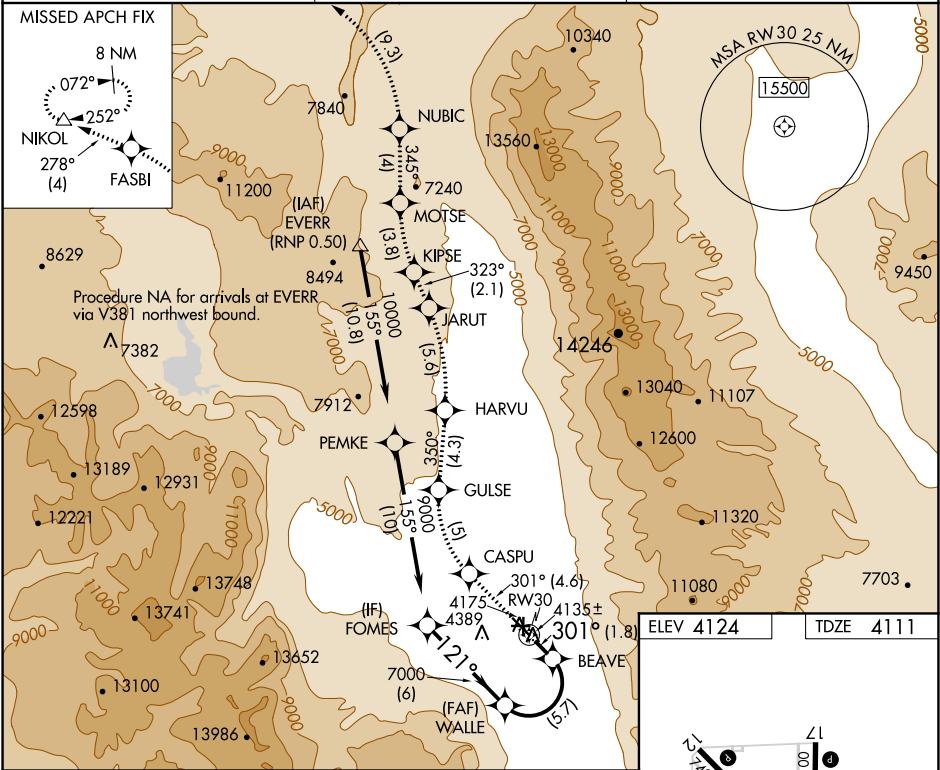
BISHOP (BIH)

RNP AR APCH, RF required.

MISSED APPROACH:

Climb to 13000 via 301° track to CASPU, right turn to GULSE, 350° track to HARVU, left turn to JARUT, 323° track to KIPSE, right turn to MOTSE, 345° track to NUBIC, left turn to FASBI, 278° track to NIKOL and hold.

ASOS 119.025	OAKLAND CENTER 125.75 284.65	UNICOM 123.0 (CTAF)
-----------------	---------------------------------	------------------------



13000 CASPU

301° tr

GULSE

Procedure Turn NA

GP 3.52° TCH 52

WALLE

BEAVE

7000

9000

121°

301°

1.8 NM

5.7 NM

6 NM

CATEGORY	A	B	C	D
RNP 0.30 DA	4476-1	365 (400-1)		NA

AUTHORIZATION REQUIRED

MIRL Rwy 8-26, 12-30, and 17-35

REIL Rwy 12, 17, 30 and 35