

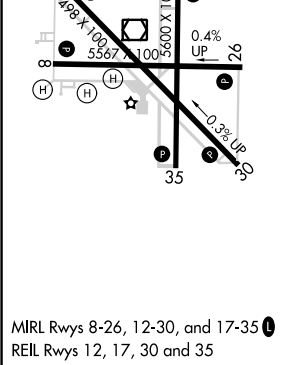
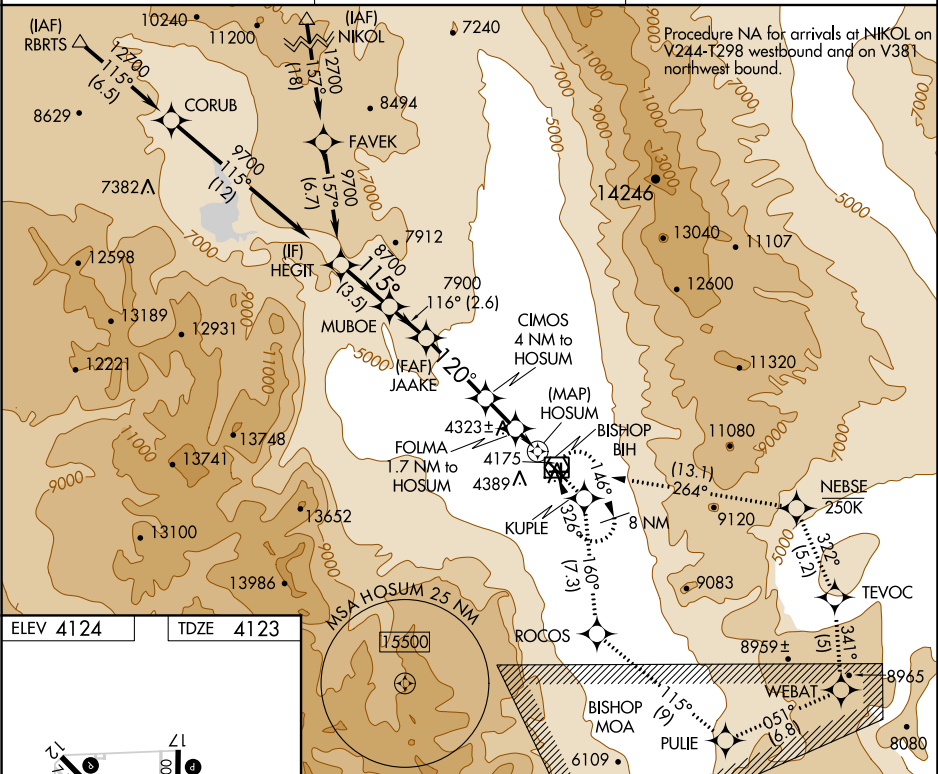
APP CRS	Rwy Idg
120°	7498
	TDZE
	4123
	Apt Elev
	4124

RNAV (GPS) Z RWY 12

BISHOP (BIH)

<div><div>▼</div><div>▲</div></div> <div>DME/DME RNP-0.3 NA Missed approach requires minimum climb of 325 feet per NM to 11000; if unable, see RNAV (GPS) Y RWY 12.</div>	MISSED APPROACH: (Do not exceed 250 KIAS until NEBSE) Climb to 13000 direct KUPLE and on track 160° to ROCOS and on track 115° to PULIE and on track 051° to WEBAT and on track 341° to TEVOC and on track 322° to NEBSE and on track 264° to BIH VOR/DME and hold.
---	--

ASOS 119.025	OAKLAND CENTER 125.75 284.65	UNICOM 123.0 (CTAF)
-----------------	---------------------------------	------------------------



Visual Segment - Obstacles.			
HEGIT	MUBOE	JAAKE	KUPLE
9700	8700	7900	6200
115° 116° 120°			
3.5 NM 2.6 NM 4.5 NM 2.3 NM 1.7 NM 1 NM			
CATEGORY	A	B	C
LNAV MDA	4580-1¼	457 (500-1¼)	NA
CIRCLING	6420-1¼ 2296 (2300-1¼)	6420-1½ 2296 (2300-1½)	6420-3 2296 (2300-3)