

WAAS CH 49200 W12A	APP CRS 116°	Rwy Idg TDZE Apt Elev	4001 193 193
--	------------------------	-----------------------------	---

RNAV (GPS) RWY 12

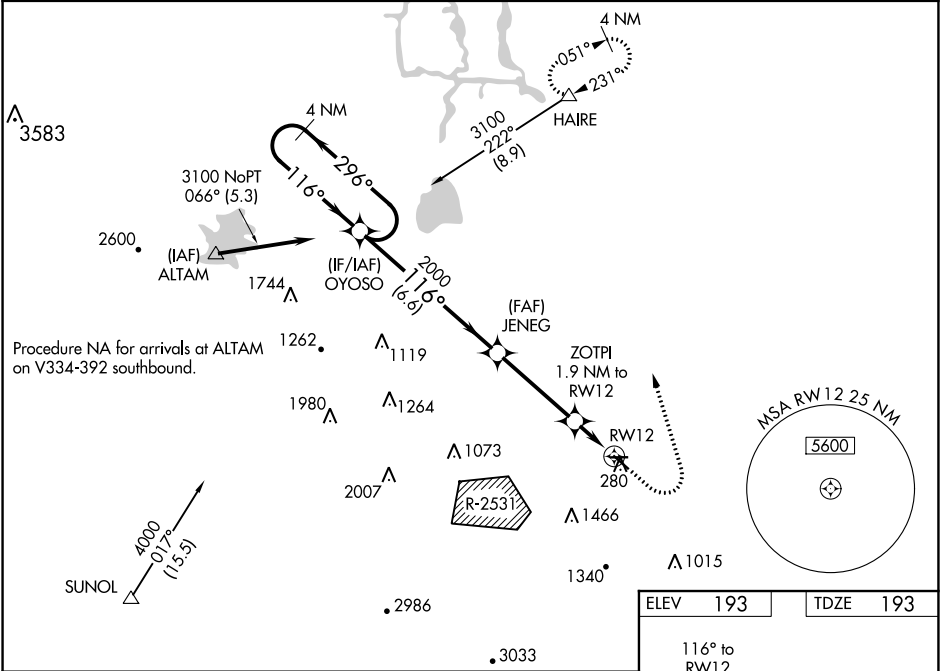
TRACY MUNI (TCY)

RNP APCH

▼ For uncompensated Baro-VNAV systems, LNAV/VNAV NA below -15°C or above 54°C.
Circling NA southwest of Rwy 12-30. Baro-VNAV and VDP NA when using Stockton altimeter setting.
Circling Rwy 30 NA at night. Rwy 12 helicopter visibility reduction below ¾ SM NA.
When local altimeter setting not received, use Stockton altimeter setting: increase all DAs to 507 feet;
increase all MDAs 60 feet and visibilities LNAV Cat C ½ SM.

MISSED APPROACH:
Climb to 700 then
climbing left turn to
3200 direct HAIRE
and hold.

AWOS-3 118.375	NORCAL APP CON 123.85 278.3	UNICOM 123.075 (CTAF) 0
--------------------------	---------------------------------------	-----------------------------------



4 NM Holding Pattern

OYOSO

JENEG

ZOTPI

HAIRE

GP 3.00°
TCH 41

6.6 NM

3.7 NM

1 NM

0.9 NM

CATEGORY	A	B	C	D
LPV DA	443-7/8	250 (300-7/8)		NA
LNAV/VNAV DA	447-7/8	254 (300-7/8)		NA
LNAV MDA	520-1	327 (400-1)		NA
CIRCLING	580-1 387 (400-1)	660-1 467 (500-1)	660-1½ 467 (500-1½)	NA

ELEV 193

TDZE 193

116° to RW12

3438 X 75

0.5% UP

0.3% UP

4001 X 75

MIRL Rwy 8-26 and 12-30

REIL Rwy 8, 12, 26 and 30

SW-2, 31 DEC 2020 to 28 JAN 2021

SW-2, 31 DEC 2020 to 28 JAN 2021