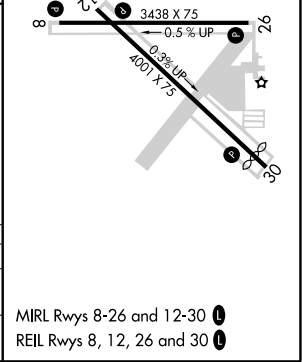
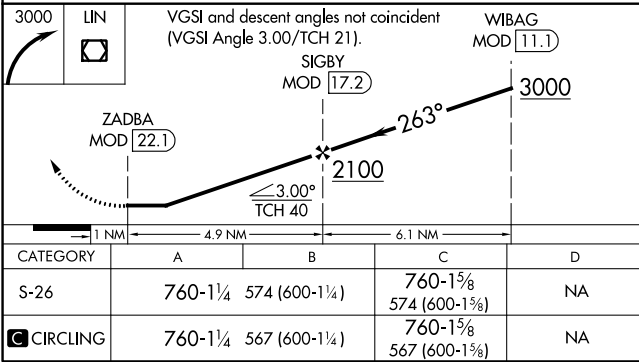
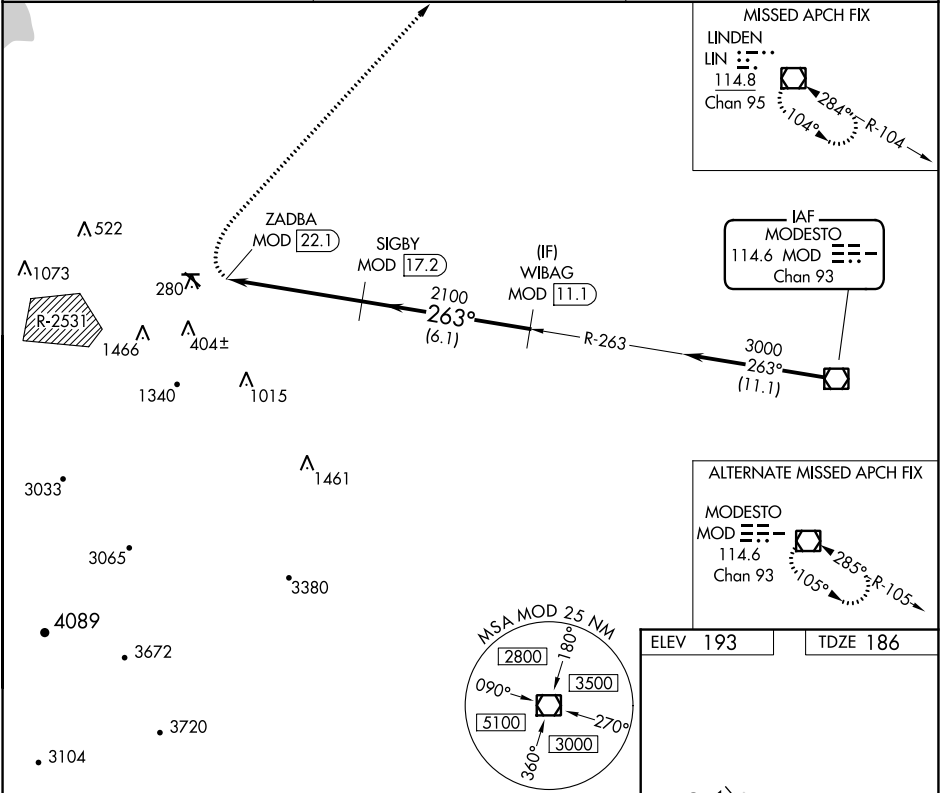


VOR/DME MOD	APP CRS	Rwy Idg	3438
114.6	263°	TDZE	186
Chan 93		Apt Elev	193

VOR RWY 26
TRACY MUNI (TCY)

DME required.	MISSED APPROACH: Climbing right turn to 3000 direct LIN VOR/DME and hold.
Circling NA southwest of Rwy 12-30. Circling Rwy 30 NA at night. Rwy 26 helicopter visibility reduction below ¾ SM NA. When local altimeter setting not received, use Stockton altimeter setting: increase all MDAs 60 feet and visibility Cat C ½ SM.	

AWOS-3 118.375	NORCAL APP CON 123.85 278.3	UNICOM 123.075 (CTAF) 0
-------------------	--------------------------------	----------------------------



SW-2, 31 DEC 2020 to 28 JAN 2021

SW-2, 31 DEC 2020 to 28 JAN 2021