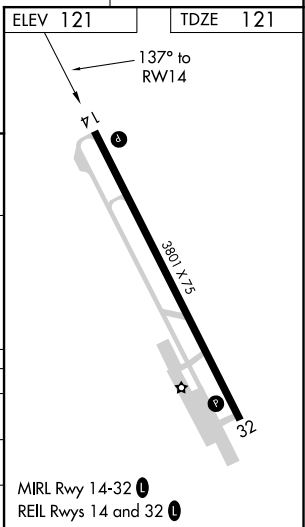
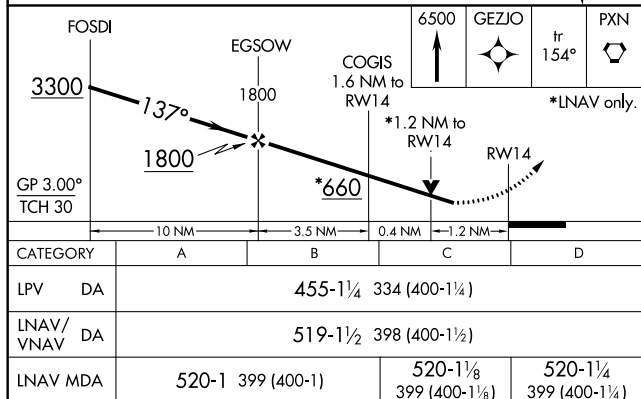
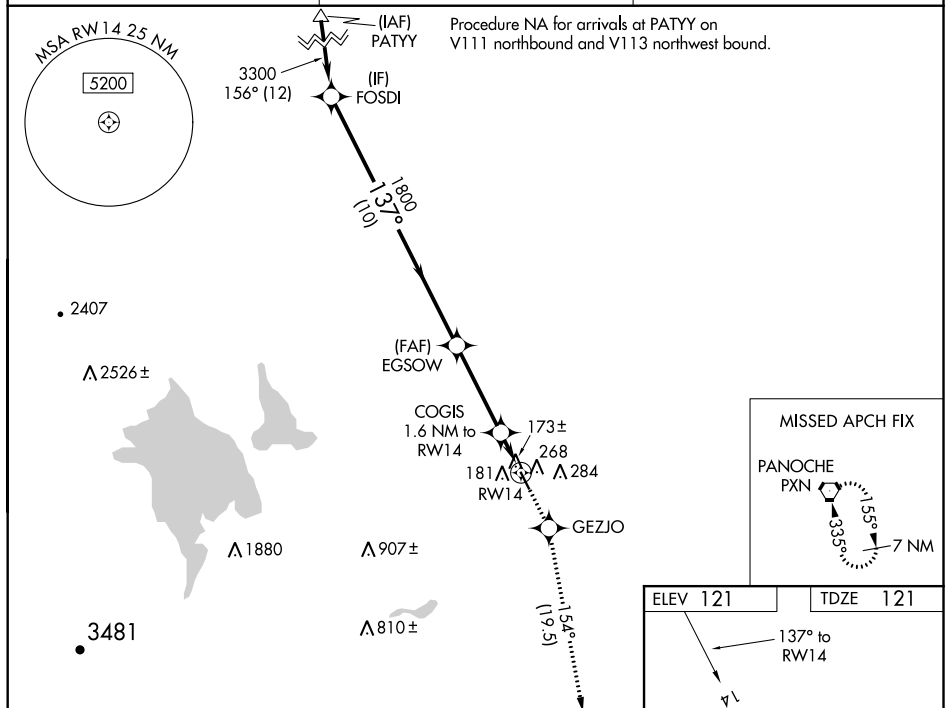


RNAV (GPS) RWY 14
LOS BANOS MUNI (LSN)

V Rwy 14 helicopter visibility reduction below $\frac{3}{4}$ SM NA. Baro-VNAV and VDP NA
A NA when using Merced Rgnl/Macready Field altimeter setting. For uncompensated
Baro-VNAV systems, LNAV/VNAV NA below -15°C or above 54°C. When
local altimeter setting not received, use Merced Rgnl/Macready Field altimeter
setting and increase all DA/MDA 60 feet, and all visibility $\frac{1}{4}$ SM.

MISSED APPROACH: Climb to 6500 direct GEZIO and on track 154° to PXN VORTAC and hold, continue climb-in-hold to 6500.

AWOS-3 118.675	NORCAL APP CON 120.95 269.45	UNICOM 122.8 (CTAF) 0
--------------------------	--	---------------------------------



SW-2, 31 DEC 2020 to 28 JAN 2021