

LOC/DME I-LHM <b>108.75</b> Chan <b>24</b> (Y)	APP CRS <b>151°</b>	Rwy Idg <b>6001</b> TDZE <b>121</b> Apt Elev <b>121</b>
--	------------------------	---

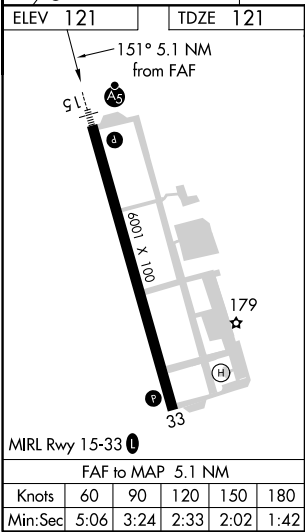
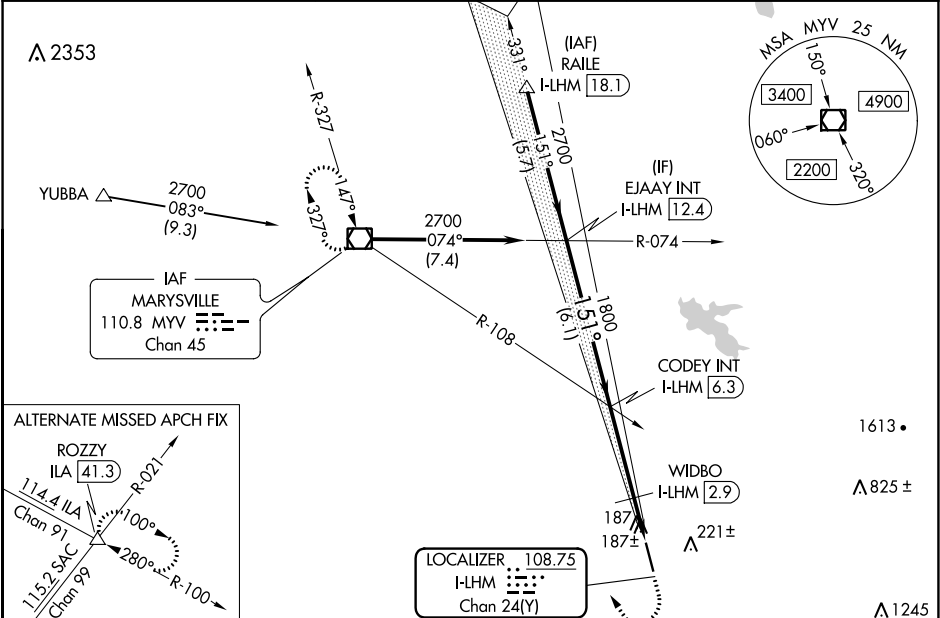
ILS or LOC RWY 15  
LINCOLN RGNL/KARL HARDER FIELD (LHM)

**NA** When local altimeter setting not received, use Beale AFB altimeter setting and increase all DA/MDA 40 feet, and increase S-LOC 15 Cat C/D visibility ¼ mile. VDP NA with Beale AFB altimeter setting. WIDBO fix minimums: for inop ALS, increase S-LOC 15 Cat D visibility to 1 mile.

**MAISLR**

**MISSED APPROACH:** Climb to 1200 then climbing right turn to 3000 direct MYV VOR/DME and hold.

AWOS-3 <b>124.25</b>	NORCAL APP CON <b>125.4 259.1</b>	UNICOM <b>123.0</b> (CTAF)
-------------------------	--------------------------------------	-------------------------------



<div>EJAAY INT I-LHM 12.4</div> <div>CODEY INT I-LHM 6.3</div> <div>WIDBO I-LHM 2.9</div> <div>GS 3.00° TCH 46</div>				#640 when using Beale AFB altimeter setting.				1200 ↑	3000 ↗	MYV ☐
<div>2700</div> <div>1800</div> <div>1800</div> <div>*#600</div> <div>6.1 NM</div> <div>3.4 NM</div> <div>0.8 NM</div> <div>0.9 NM</div> <div>151°</div> <div>*I-LHM 2.1</div> <div>I-LHM 1.2</div> <div>*LOC only</div>										
CATEGORY		A		B		C		D		
S-ILS 15		321-½ 200 (200-½)								
S-LOC 15		600-½ 479 (500-½)		600-¾ 479 (500-¾)		600-1 479 (500-1)				
CIRCLING		600-1 479 (500-1)		600-1½ 479 (500-1½)		680-2 559 (600-2)				
WIDBO FIX MINIMUMS										
S-LOC 15		460-½ 339 (400-½)		460-¾ 339 (400-¾)						
CIRCLING		520-1 399 (400-1)		580-1 459 (500-1)		580-1½ 459 (500-1½)		680-2 559 (600-2)		

SW-2, 31 DEC 2020 to 28 JAN 2021

SW-2, 31 DEC 2020 to 28 JAN 2021