

WAAS CH 82618 W15A	APP CRS 151°	Rwy Idg TDZE 121 Apt Elev 121	6001
--	------------------------	---	-------------

RNAV (GPS) RWY 15

INCOLN RGNL/KARL HARDER FIELD (LHM)

RNP APCH.

▼

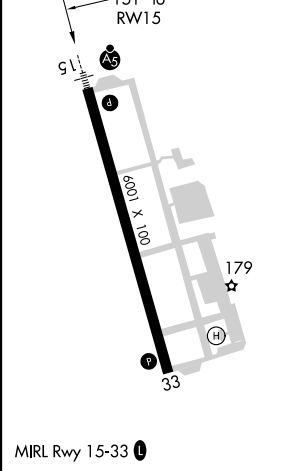
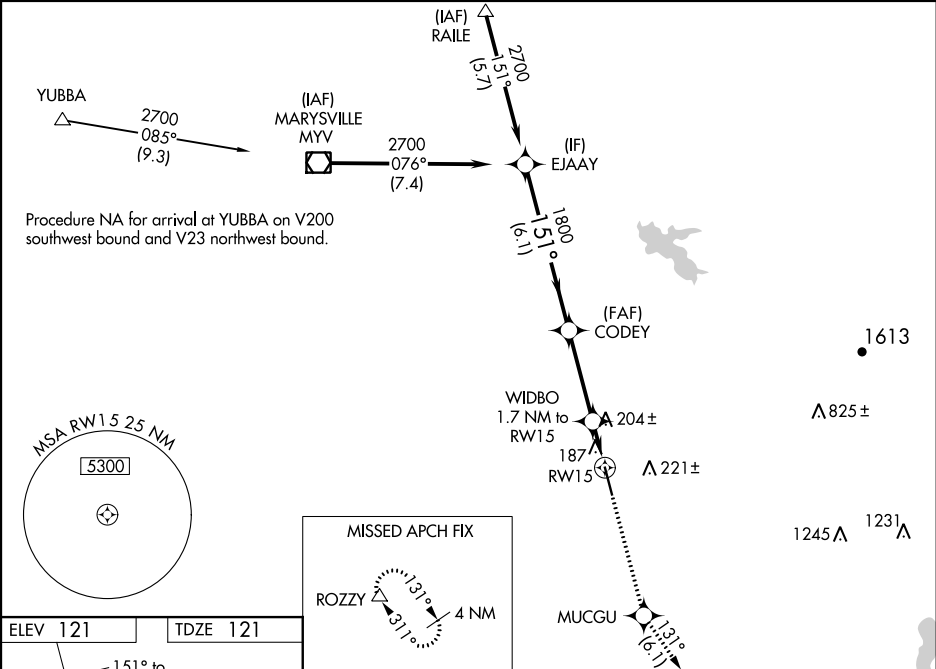
▲

For uncompensated Baro-VNAV systems, LNAV/VNAV NA below -15°C or above 48°C. VDP and Baro-VNAV NA when using Beale AFB altimeter setting. When local altimeter setting not received, use Beale AFB altimeter setting and increase all DA/MDA 40 feet. For inop ALS when using Beale AFB altimeter setting, increase LNAV Cat D visibility to 1¼.

MALSR

MISSED APPROACH:
Climb to 2500 direct MUCGU and on track 131° to ROZZY and hold.

AWOS-3 124.25	NORCAL APP CON 125.4 259.1	UNICOM 123.0 (CTAF) 0
-------------------------	--------------------------------------	---------------------------------



EJAAY 2700		CODEY 1800		2500	MUCGU	tr 131°	ROZZY
GP 3.00° TCH 46		151°		*LNAV only			
1800		*680		*0.9 NM to RW15			
6.1 NM		3.4 NM		0.8 NM 0.9 NM			
CATEGORY	A	B	C	D			
LPV DA	321-½		200 (200-½)				
LNAV/VNAV DA	452-¾		331 (400-¾)				
LNAV MDA	460-½		339 (400-½)		460-1 339 (400-1)		
CIRCLING	520-1 399 (400-1)	580-1 459 (500-1)	580-1½ 459 (500-1½)	680-2 559 (600-2)			