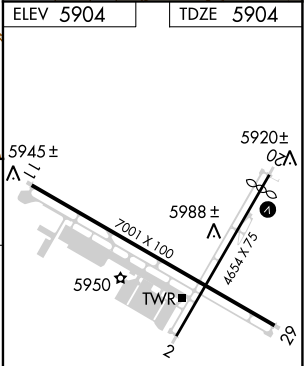
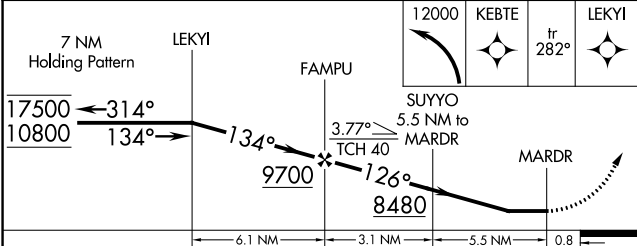
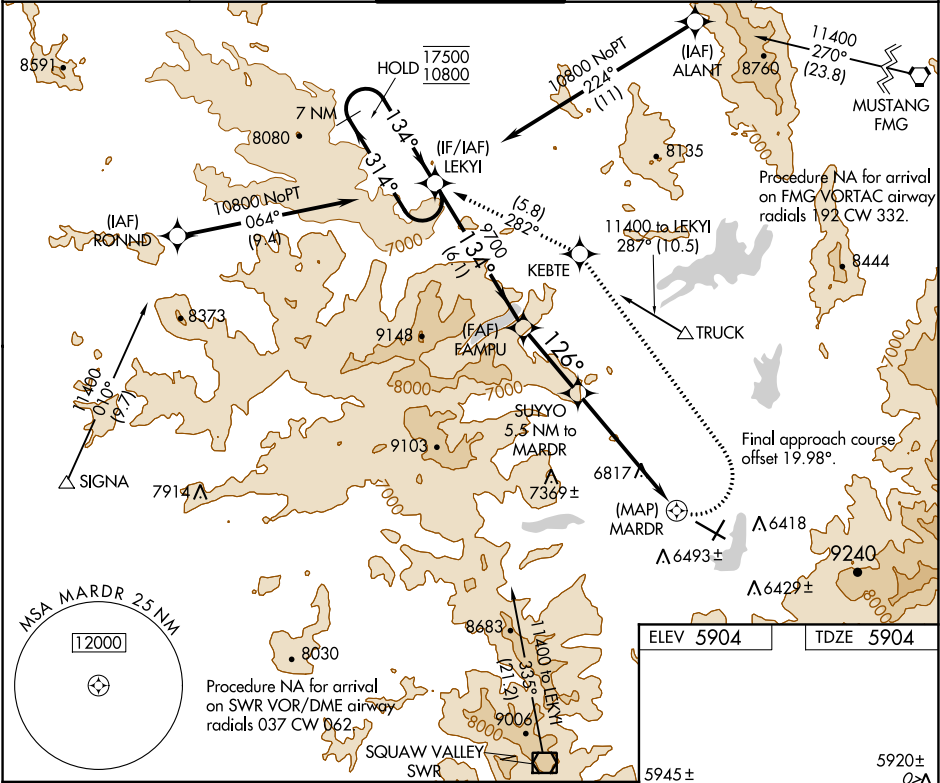


APP CRS	Rwy ldg	7001
126°	TDZE	5904
	Apt Elev	5904

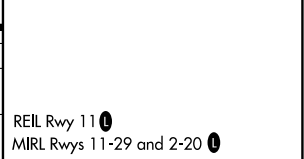
RNAV (GPS) RWY 11
TRUCKEE-TAHOE (TRK)

RNP APCH.	MISSED APPROACH: (Do not exceed 220K until KEBTE) Climbing left turn to 12000 direct KEBTE and track 282° to LEKYI and hold, continue climb-in-hold 12000.
Circling NA for Cat C south of Rwy 29 and east of Rwy 2. Procedure NA at night. Rwy 11 helicopter visibility reduction below 1 SM NA. When local altimeter setting not received, procedure NA.	

AWOS-3PT 118.0	OAKLAND CENTER 127.95 316.1	TRUCKEE TOWER ★ 120.575 (CTAF) 0	GND CON 118.3	UNICOM 122.95
--------------------------	---------------------------------------	--	-------------------------	-------------------------



CATEGORY	A	B	C	D
LNVA MDA	7720-1¼ 1816 (1900-1¼)	7720-1½ 1816 (1900-1½)	7720-3 1816 (1900-3)	NA
CIRCLING	7720-1¼ 1816 (1900-1¼)	7720-1½ 1816 (1900-1½)	7720-3 1816 (1900-3)	NA



SW-2, 31 DEC 2020 to 28 JAN 2021

SW-2, 31 DEC 2020 to 28 JAN 2021