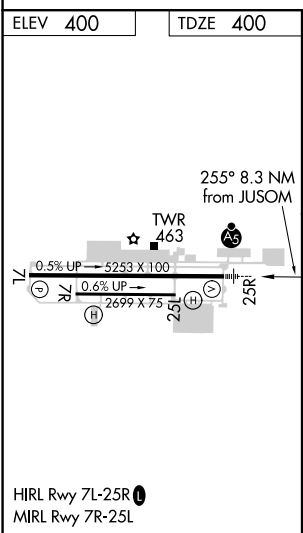
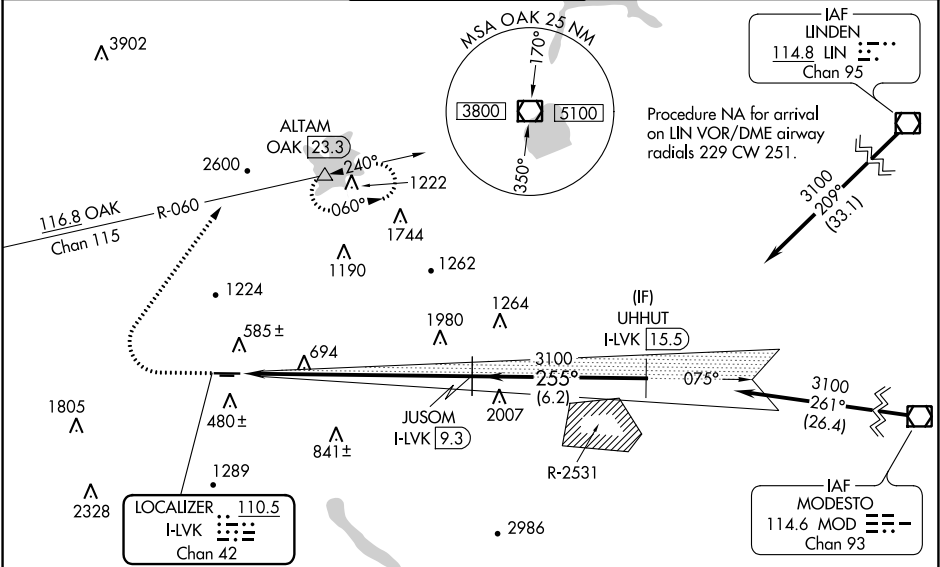


LOC/DME FLVK 110.5 Chan 42	APP CRS 255°	Rwy ldg 5253 TDZE 400 Apt Elev 400
--	------------------------	---

ILS RWY 25R
LIVERMORE MUNI (LVK)

DME required.	MALS R	MISSED APPROACH: Climb to 1200 then climbing right turn to 5000 on heading 020° and OAK VOR/DME R-060 to ALTAM/OAK VOR/DME 23.3 DME and hold, continue climb-in-hold to 5000. *Missed approach requires a minimum climb of 358 feet per NM to 3600, if unable to meet climb gradient, see LOC RWY 25R.
---------------	--------	---

ATIS 119.65	NORCAL APP CON 123.85 278.3	LIVERMORE TOWER ★ 118.1 (CTAF) 239.25	GND CON 121.6	UNICOM 122.95
-----------------------	---------------------------------------	---	-------------------------	-------------------------



ELEV 400	TDZE 400
1200	5000
OAK R-060	ALTAM
JUSOM I-LVK 9.3	UHHUT I-LVK 15.5
3100	255°
3100	3100
GS 3.00°	TCH 47
8.3 NM	6.2 NM
CATEGORY	A B C D
S-ILS 25R	600-½ 200 (200-½)

SW-2, 31 DEC 2020 to 28 JAN 2021

SW-2, 31 DEC 2020 to 28 JAN 2021