

LOC/DME I-LVK <b>110.5</b> Chan <b>42</b>	APP CRS <b>255°</b>	Rwy ldg TDZE <b>400</b> Apt Elev <b>400</b>
---	------------------------	---

LOC RWY 25R  
LIVERMORE MUNI (LVK)

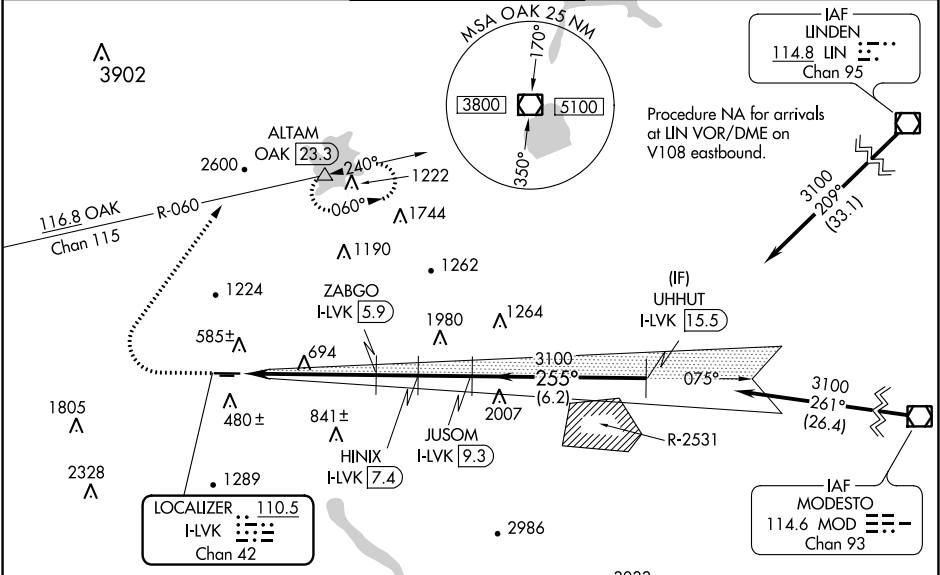
**⚠** Circling to Rwy 25L NA at night.  
Inop table does not apply to S-25R Cats C/D.  
Circling NA north of Rwy 7L-25R.  
DME required.

MALSRL

**A5**

MISSED APPROACH: Climb to 2000 then climbing right turn to 5000 on heading 020° and OAK VOR/DME R-060 to ALTAM/OAK VOR/DME 23.3 DME and hold, continue climb-in-hold to 5000.  
\*Missed approach requires minimum climb of 235 feet per NM to 3600.

ATIS <b>119.65</b>	NORCAL APP CON <b>123.85 278.3</b>	LIVERMORE TOWER ★ <b>118.1 (CTAF) 0 239.25</b>	GND CON <b>121.6</b>	UNICOM <b>122.95</b>
-----------------------	---------------------------------------	---	-------------------------	-------------------------



ELEV 400	TDZE 400
----------	----------

**7L**

0.5% UP → 5253 X 100

0.6% UP → 2699 X 75

**25R**

255° 8.3 NM from FAF

TWR 463

**A5**

2000

5000

OAK R-060

ALTAM

HINIX I-LVK 7.4

JUSOM I-LVK 9.3

UHHUT I-LVK 15.5

ZABGO I-LVK 5.9

I-LVK 2.9

I-LVK 1

3100

2520

2000

3100

255°

3100

2.9 NM

1.5 NM

1.9 NM

6.2 NM

CATEGORY	A	B	C	D
S-LOC 25R*	1080-1½ 680 (700-½)		1080-1½ 680 (700-½)	
S-LOC 25R	2000-¾ 1600 (1600-¾)	2000-1 1600 (1600-1)	2000-3 1600 (1600-3)	
CIRCLING	2000-1¼ 1600 (1600-1¼)	2000-1½ 1600 (1600-1½)	2000-3 1600 (1600-3)	

SW-2, 31 DEC 2020 to 28 JAN 2021

SW-2, 31 DEC 2020 to 28 JAN 2021