

WAAS CH 50214 W25A	APP CRS 255°	Rwy Idg TDZE Apt Elev	5253 400 400
--	------------------------	-----------------------------	---

RNAV (GPS) RWY 25R

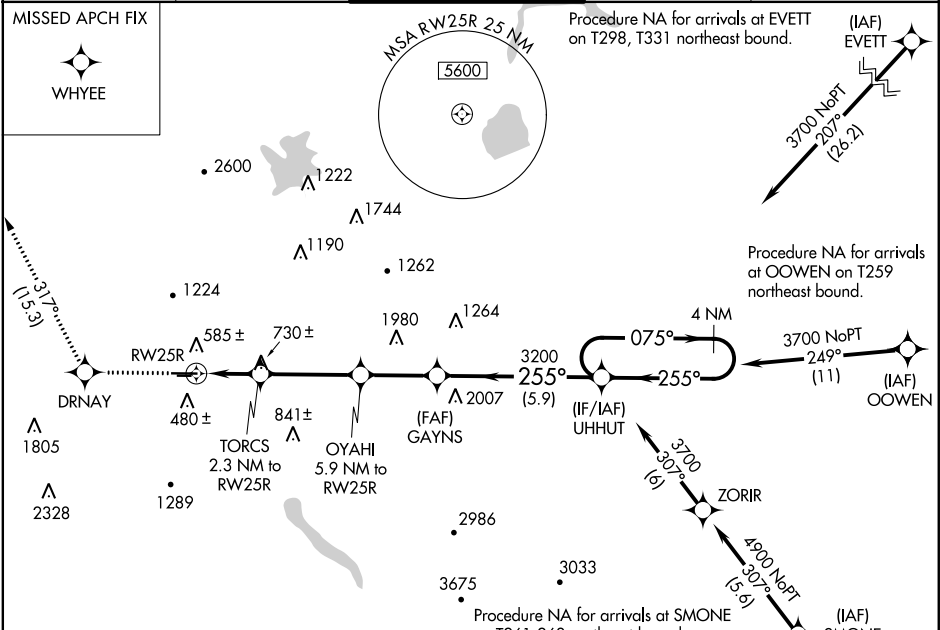
LIVERMORE MUNI (LVK)

Circling to Rwy 25L NA at night. For uncompensated Baro-VNAV systems, LNAV/VNAV NA below -5°C (23°F) or above 54°C (130°F). Circling NA north of Rwy 7L-25R. RADAR Required. DME/DME RNP-0.3 NA. For inop ALS, increase LNAV Cat C/D to 1½ SM.

MALSR

MISSED APPROACH: Climb to 4000 direct DRNAV and on track 317° to WHYEE.

ATIS 119.65	NORCAL APP CON 123.85 278.3	LIVERMORE TOWER ★ 118.1 (CTAF) 239.25	GND CON 121.6	UNICOM 122.95
-----------------------	---------------------------------------	---	-------------------------	-------------------------



ELEV 400

TDZE 400

4000

DRNAV

tr

317°

WHYEE

*LNAV only

*1.7 NM to RW25R

1180*

2320*

3200

255°

075°

3700

4 NM Holding Pattern

GP 3.00°

TCH 47

TWR 463

0.5% UP — 5253 X 100

0.6% UP — 2699 X 75

25R

255° to RW25R

255°

3817

DRNAV

tr

317°

WHYEE

OYAHU 5.9 NM to RW25R

TORCS 2.3 NM to RW25R

3200

255°

075°

3700

4 NM Holding Pattern

GP 3.00°

TCH 47

CATEGORY	A	B	C	D
LPV DA	600-½ 200 (200-½)			
LNAV/VNAV DA	843-⅞ 443 (500-⅞)			
LNAV MDA	980-½ 580 (600-½)		980-1¼ 580 (600-1¼)	
CIRCLING	980-1 580 (600-1)		1140-2 740 (800-2) 1780-3 1380 (1400-3)	