

(SOKOY3.SOKOY) 17229
SOKOY THREE DEPARTURE

AL-6094 (FAA)

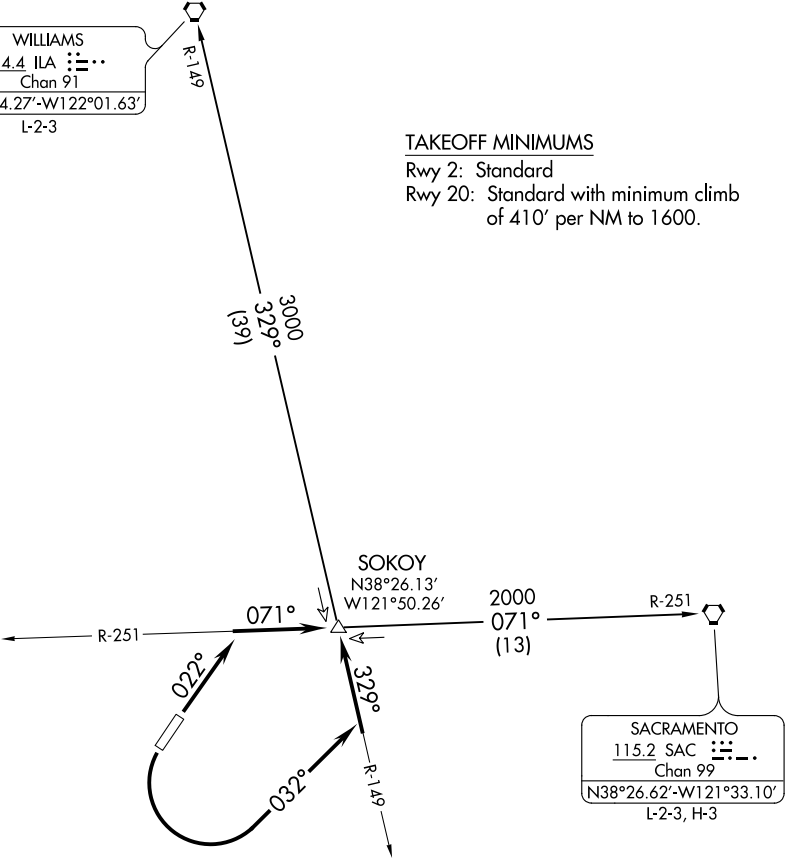
NUT TREE (VCB)
VACAVILLE, CALIFORNIA

TRAVIS DEP CON
128.4 281.45

TOP ALTITUDE:
ASSIGNED BY ATC

WILLIAMS
114.4 ILA
Chan 91
N39°04.27'-W122°01.63'
L-2-3

TAKEOFF MINIMUMS
Rwy 2: Standard
Rwy 20: Standard with minimum climb
of 410' per NM to 1600.



NOTE: Chart not to scale.

DEPARTURE ROUTE DESCRIPTION

- TAKEOFF RUNWAY 2: Climb via heading 022°, intercept SAC R-251 to SOKOY/ SAC 13 DME.
- TAKEOFF RUNWAY 20: Turn left heading 032°, intercept ILA R-149 to SOKOY/ ILA 39 DME.
- SACRAMENTO TRANSITION (SOKOY3.SAC): From over SOKOY on SAC R-251 to SAC VORTAC.
- WILLIAMS TRANSITION (SOKOY3.ILA): From over SOKOY on ILA R-149 to ILA VORTAC.

SOKOY THREE DEPARTURE
(SOKOY3.SOKOY) 17AUG17

VACAVILLE, CALIFORNIA
NUT TREE (VCB)

SW-2, 31 DEC 2020 to 28 JAN 2021

SW-2, 31 DEC 2020 to 28 JAN 2021