

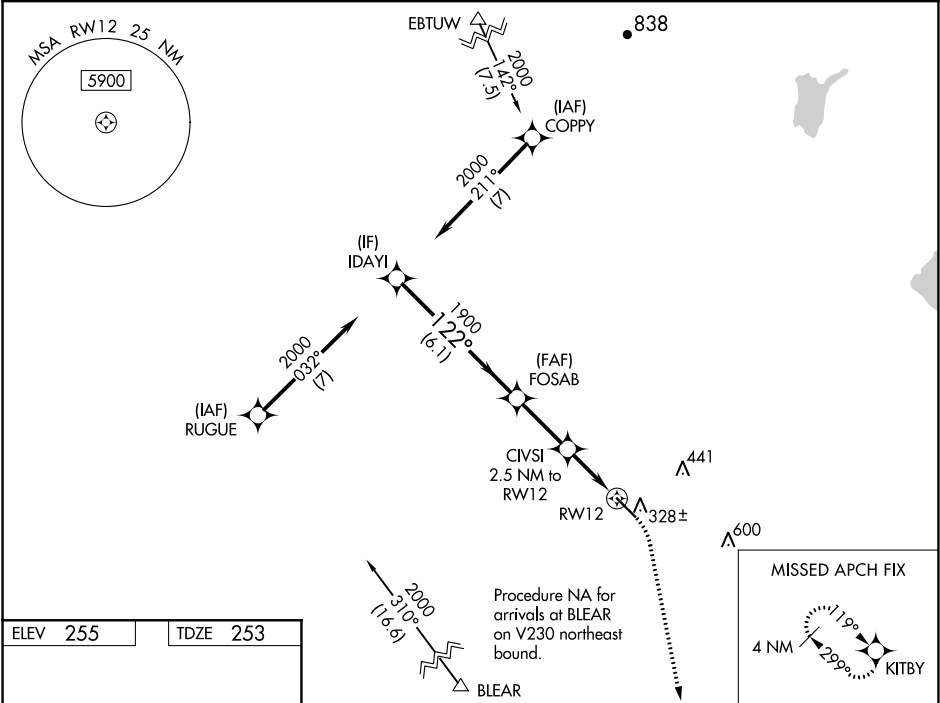
WAAS CH 62909 W12A	APP CRS 122°	Rwy Idg TDZE Apt Elev	5545 253 255
----------------------------------------	------------------------	-----------------------------	-----------------------------------------

RNAV (GPS) RWY 12

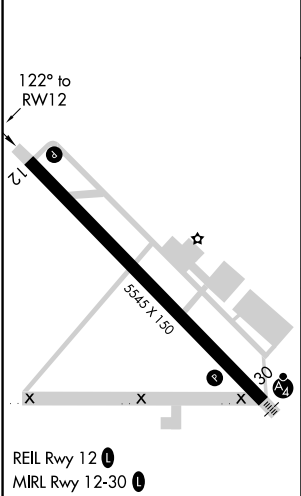
MADERA MUNI (M.A.E.)

RNP APCH.	MISSED APPROACH: Climb to 800 then climbing right turn to 2000 direct KITBY and hold.
Circling NA to Rwy 8 and 26. For uncompensated Baro-VNAV systems, LNAV/VNAV NA below -3°C or above 54°C.	

ASOS 134.725	FRESNO APP CON 119.45	CLNC DEL 119.45	UNICOM 122.8 (CTAF) 0
------------------------	---------------------------------	---------------------------	----------------------------------------



ELEV 255	TDZE 253
----------	----------



IDAY1		VGSi and RNAV glidepath not coincident (VGSi Angle 3.00/TCH 34).		800	2000	KITBY
2000		FOSAB				
122°		1900				
GP 3.00°		CIVSI				
TCH 35		2.5 NM to RWY 12				
		*1080				
		*0.9 NM to RWY 12				
		RWY 12				
		*LNNAV only				
		6.1 NM				
		2.6 NM				
		1.6 NM				
		0.9 NM				
CATEGORY	A	B	C	D		
LPV	DA	503-3/4	250 (300-3/4)	NA		
LNAV/VNAV	DA	503-3/4	250 (300-3/4)	NA		
LNAV	MDA	580-1	327 (400-1)	NA		
CIRCLING	680-1 425 (500-1)	720-1 465 (500-1)	740-1 1/2 485 (500-1 1/2)	NA		

SW-2, 31 DEC 2020 to 28 JAN 2021

SW-2, 31 DEC 2020 to 28 JAN 2021