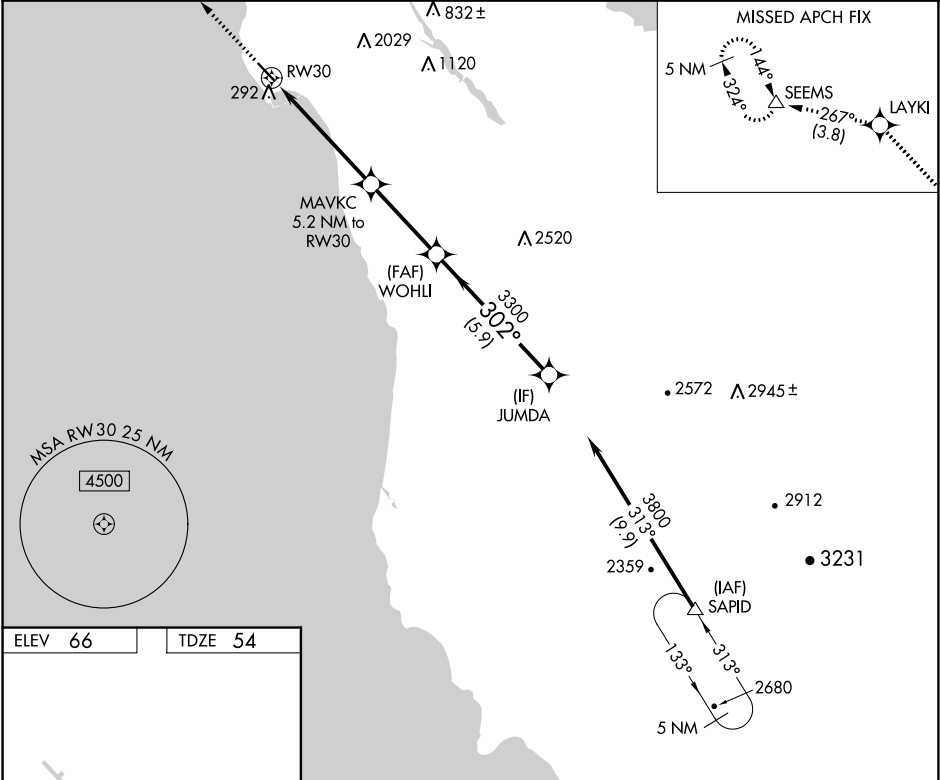


WAAS CH 50302 W30A	APP CRS 302°	Rwy Idg TDZE 54 Apt Elev 66
--	------------------------	---

RNAV (GPS) RWY 30
HALF MOON BAY (HAF)

RNP APCH. ▼	MISSED APPROACH: Climb to 4000 direct LAYKI and on track 267° to SEEMS and hold, continue climb-in-hold to 4000.
----------------	--

AWOS-3 127.275	NORCAL APP CON 135.1 307.2	UNICOM 122.8 (CTAF) 1
--------------------------	--------------------------------------	---------------------------------



--