

WAAS CH <b>93806</b> <b>W31A</b>	APP CRS <b>307°</b>	Rwy Idg TDZE <b>231</b> Apt Elev <b>231</b>
--	------------------------	---

RNAV (GPS) RWY 31

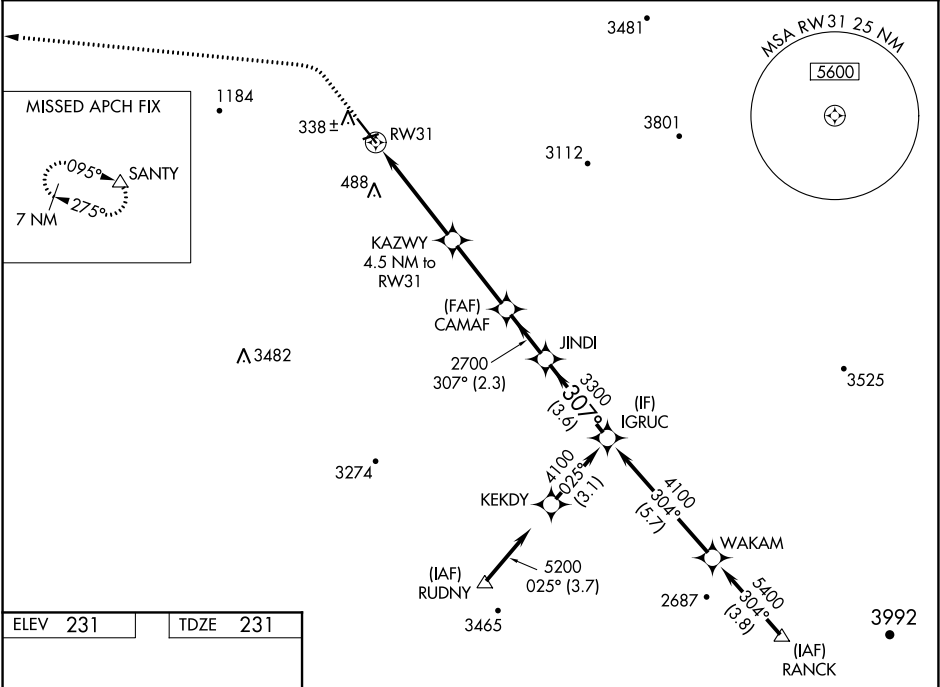
HOLLISTER MUNI (CVH)

RNP APCH.

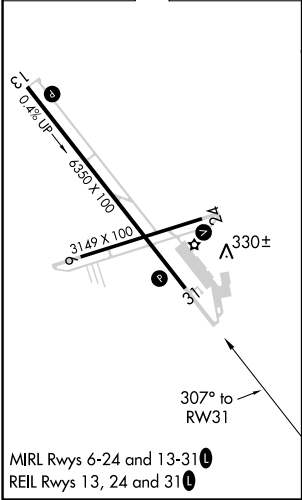
⚠ Circling to Rwy 6 NA at night. Rwy 31 helicopter visibility reduction below ¾ SM NA.  
For uncompensated Baro-VNAV systems, LNAV/VNAV NA below -15°C or above 54°C.

MISSED APPROACH: Climb to 1200, then climbing left turn to 7000 direct SANY and hold, continue climb-in-hold to 7000.

AWOS-3 <b>120.425</b>	NORCAL APP CON <b>124.525 348.675</b>	UNICOM <b>123.0 (CTAF) 0</b>
--------------------------	--	---------------------------------



ELEV 231	TDZE 231
----------	----------



1200 ↑	7000 ↙	SANTY △				
*LNAV only						
RW31 ↙		*2.3 NM to RW31	KAZWY 4.5 NM to RW31	CAMAF 2700	JINDI	IGRUC 4100
2.3 NM		2.2 NM	3.1 NM	2.3 NM	3.6 NM	GP 3.00° TCH 44
2.3 NM		2.2 NM	3.1 NM	2.3 NM	3.6 NM	
CATEGORY						D
LPV DA	494-7 <sup>8</sup> / <sub>8</sub> 263 (300-7 <sup>8</sup> / <sub>8</sub> )					NA
LNAV/VNAV DA	719-1 <sup>3</sup> / <sub>8</sub> 488 (500-1 <sup>3</sup> / <sub>8</sub> )					NA
LNAV MDA	1000-1 769 (800-1)	1000-1 <sup>1</sup> / <sub>4</sub> 769 (800-1 <sup>1</sup> / <sub>4</sub> )	1000-2 <sup>1</sup> / <sub>2</sub> 769 (800-2 <sup>1</sup> / <sub>2</sub> )			NA
CIRCLING	1000-1 769 (800-1)	1000-1 <sup>1</sup> / <sub>4</sub> 769 (800-1 <sup>1</sup> / <sub>4</sub> )	1000-2 <sup>1</sup> / <sub>2</sub> 769 (800-2 <sup>1</sup> / <sub>2</sub> )			NA

SW-2, 31 DEC 2020 to 28 JAN 2021

SW-2, 31 DEC 2020 to 28 JAN 2021