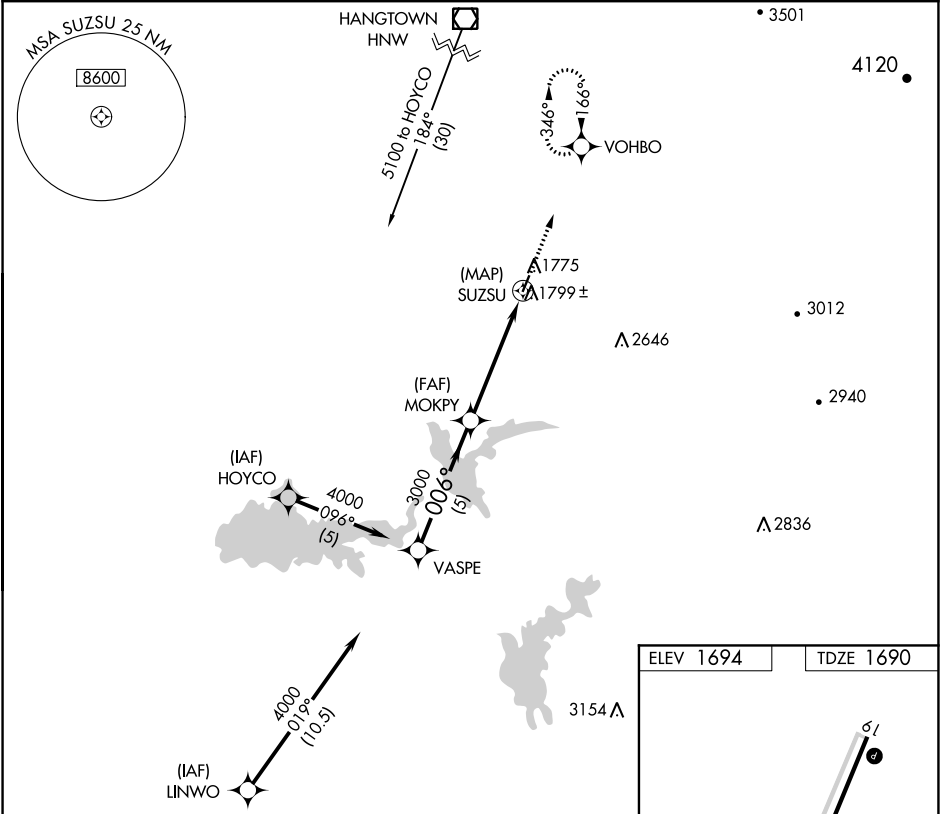


APP CRS	Rwy Idg	3401
006°	TDZE	1690
	Apt Elev	1694

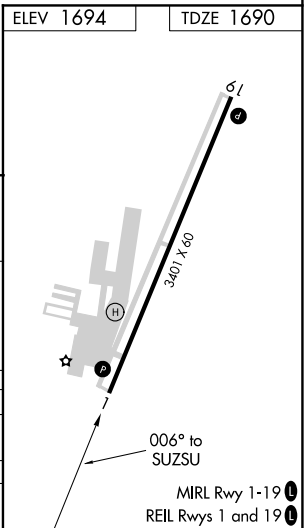
GPS RWY 1  
WESTOVER FIELD AMADOR COUNTY (JAQ)

<div><div>▼</div><div>▲NA</div></div> <div>When local altimeter setting not received, use Sacramento Executive altimeter setting.</div>	MISSED APPROACH: Climb to 4500 on 006° course to VOHBO and hold.
---	--

AWOS-3 121.125	NORCAL APP CON 125.1 363.2	UNICOM 123.075 (CTAF) 0
-------------------	-------------------------------	----------------------------



<div><div>VASPE</div><div>MOKPY</div><div>SUZSU</div><div>4000</div><div>3000</div><div>4500</div><div>VOHBO</div><div>006° crs</div><div>Procedure Turn NA</div></div>				
<div><div>5 NM</div><div>5 NM</div></div>				
CATEGORY	A	B	C	D
S-1	2060-1	370 (400-1)	NA	
SACRAMENTO EXECUTIVE ALTIMETER SETTING MINIMUMS				
S-1	2380-1	690 (700-1)	NA	



SW-2, 31 DEC 2020 to 28 JAN 2021

SW-2, 31 DEC 2020 to 28 JAN 2021