

VOR/DME LIN	APP CRS	Rwy Idg	3401
114.8	012°	TDZE	1690
Chan 95		Apt Elev	1694

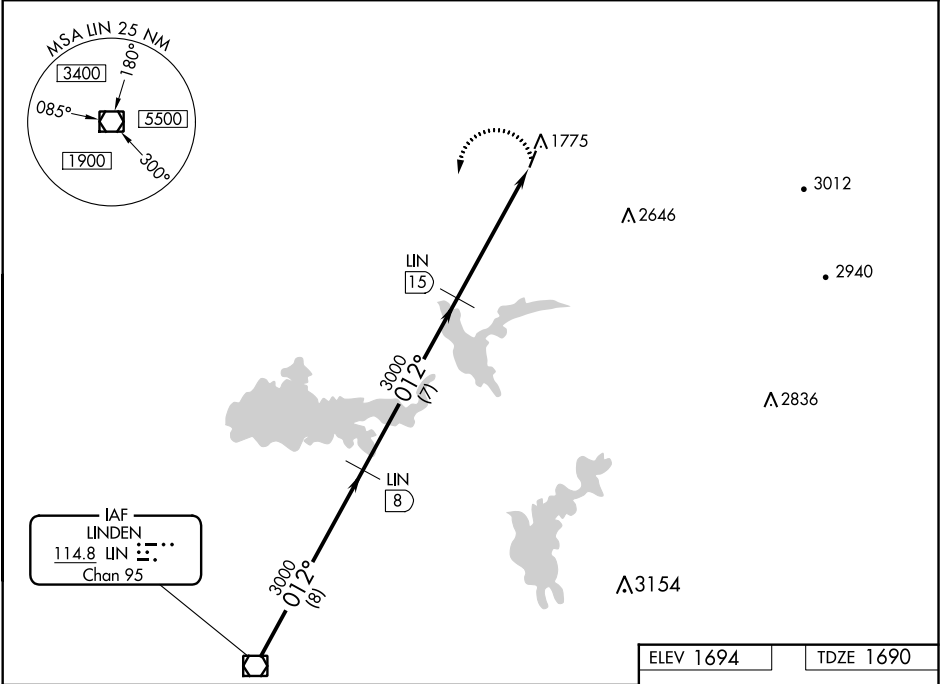
VOR/DME RWY 1  
WESTOVER FIELD AMADOR COUNTY (JAQ)

**NA**

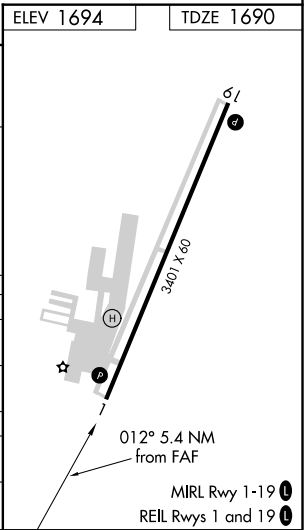
If local altimeter not received, use Sacramento Executive altimeter setting.

MISSED APPROACH: Climbing left turn to 3000 via LIN R-012 to LIN VOR/DME.

AWOS-3 121.125	NORCAL APP CON 125.1 363.2	UNICOM 123.075 (CTAF) <b>0</b>
-------------------	-------------------------------	-----------------------------------



<p>The diagram shows a flight path starting at 3000 feet. A horizontal segment of 8 NM is followed by a 012° turn. Another horizontal segment of 7 NM leads to a point marked with an asterisk (*). A third horizontal segment of 5.4 NM follows, then a descent to 20.4 feet, and finally a dotted curved segment. Labels include LIN VOR/DME, LIN 8, LIN 15, LIN 20.4, and LIN R-012 with a 3000 feet reference.</p>				
CATEGORY	A	B	C	D
S-1	2080-1 390 (400-1)	2080-1¼ 390 (400-1¼)	NA	
CIRCLING	2200-1 506 (600-1)	2200-1¼ 506 (600-1¼)	NA	
SACRAMENTO EXECUTIVE ALTIMETER SETTING MINIMUMS				
S-1	2380-1 690 (700-1)	2380-1¼ 690 (700-1¼)	NA	
CIRCLING	2520-1 826 (900-1)	2520-1¼ 826 (900-1¼)	NA	



SW-2, 31 DEC 2020 to 28 JAN 2021

SW-2, 31 DEC 2020 to 28 JAN 2021