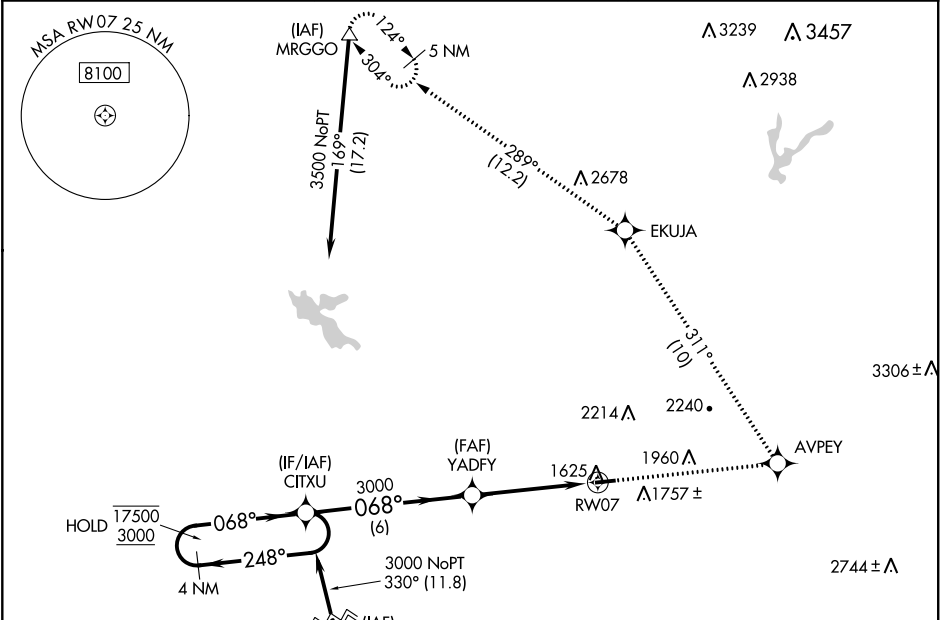


WAAS CH 90515 W07A	APP CRS 068°	Rwy Idg TDZE 1532 Apt Elev 1538
--	------------------------	---

RNAV (GPS) RWY 7
AUBURN MUNI (AUN)

RNP APCH. ▼ Circling Rwy 25 NA at night. Rwy 7 helicopter visibility reduction below ¾ SM NA. For uncompensated Baro-VNAV systems, LNAV/VNAV NA below -18°C or above 54°C. ▲	MISSED APPROACH: Climb to 5000 direct AVPEY and left turn on track 311° to EKUJA and on track 289° to MRGGO and hold.
--	---

AWOS-3 119.375	NORCAL APP CON 125.4 317.5	UNICOM 122.7 (CTAF) 0
--------------------------	--------------------------------------	---------------------------------



VGSI and RNAV glidepath not coincident (VGSI Angle 3.00/TCH 21).		ELEV 1538		TDZE 1532	
4 NM Holding Pattern		*LNAV only			
17500 3000 GP 3.00° TCH 45		MRL Rwy 7-25 0			
CATEGORY	A	B	C	D	
LPV DA	1848-1¼	316 (400-1¼)	NA	NA	068° to RW07
LNAV/VNAV DA	1968-1¾	436 (500-1¾)	NA	NA	
LNAV MDA	2100-1	568 (600-1)	NA	NA	
CIRCLING	2200-1 662 (700-1)	2400-1¼ 862 (900-1¼)	NA	NA	

SW-2, 31 DEC 2020 to 28 JAN 2021

SW-2, 31 DEC 2020 to 28 JAN 2021