

APP CRS
297°

Rwy Idg
TDZE
5
Apt Elev
5

2621

RNAV (GPS) Z RWY 30

SAN CARLOS (SQL)

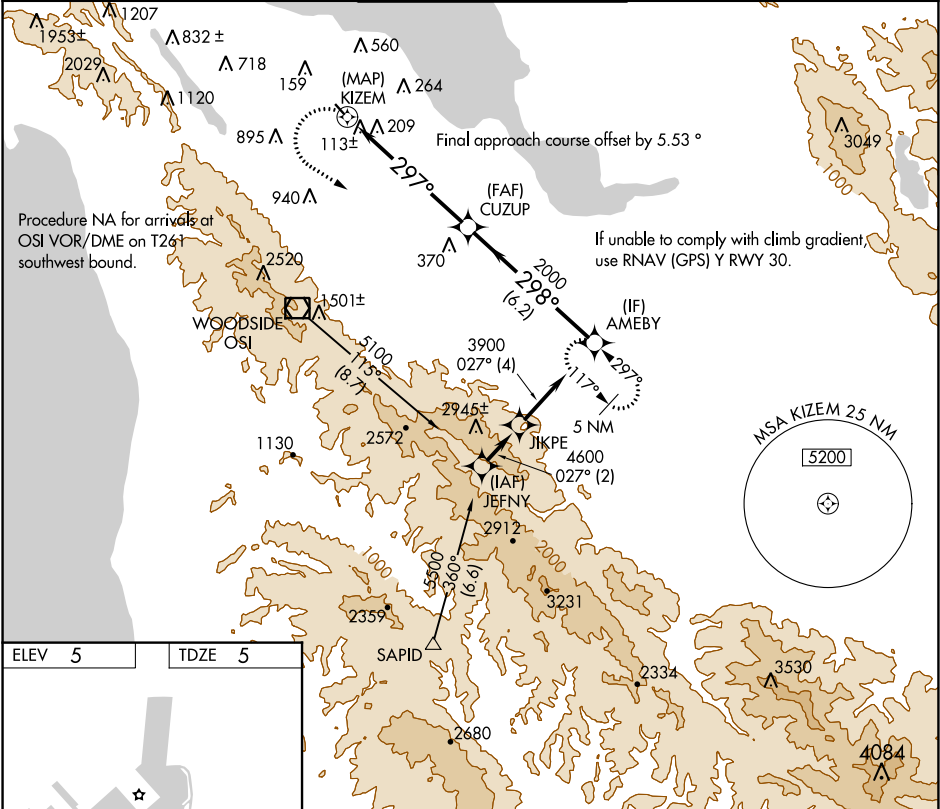
▼

▲

DME/DME RNP-0.3 NA. When local altimeter setting not received, use San Francisco Intl altimeter setting and increase all MDA 40 feet. Rwy 30 visibility reduction by helicopters below 1 SM NA.

MISSED APPROACH: Climbing left turn to 5400 direct AMEBY and hold, continue climb-in-hold to 5400. Missed approach requires minimum climb of 302 feet per NM to 5400.

| | | | | |
|---------------|--------------------------------|--|------------------|------------------|
| ATIS 125.9 | NORCAL APP CON 133.95 317.6 | SAN CARLOS TOWER ★ 119.0 (CTAF) 0 326.2 | GND CON 121.6 | UNICOM 122.95 |
|---------------|--------------------------------|--|------------------|------------------|



ELEV 5

TDZE 5

REIL Rwy 12 and 30 1

MIRL Rwy 12-30 1

5400

AMEBY

VGSI and descent angles not coincident (VGSI Angle 3.00/TCH 25).

CUZUP

AMEBY

3900

298°

2000

297°

KIZEM

3.05°

TCH 40

0.1

5.9 NM

6.2 NM

| | | | | |
|----------|------------------------|------------------------|----|---|
| CATEGORY | A | B | C | D |
| LNAV MDA | 900-1¼ 895 (900-1¼) | 900-1½ 895 (900-1½) | NA | |