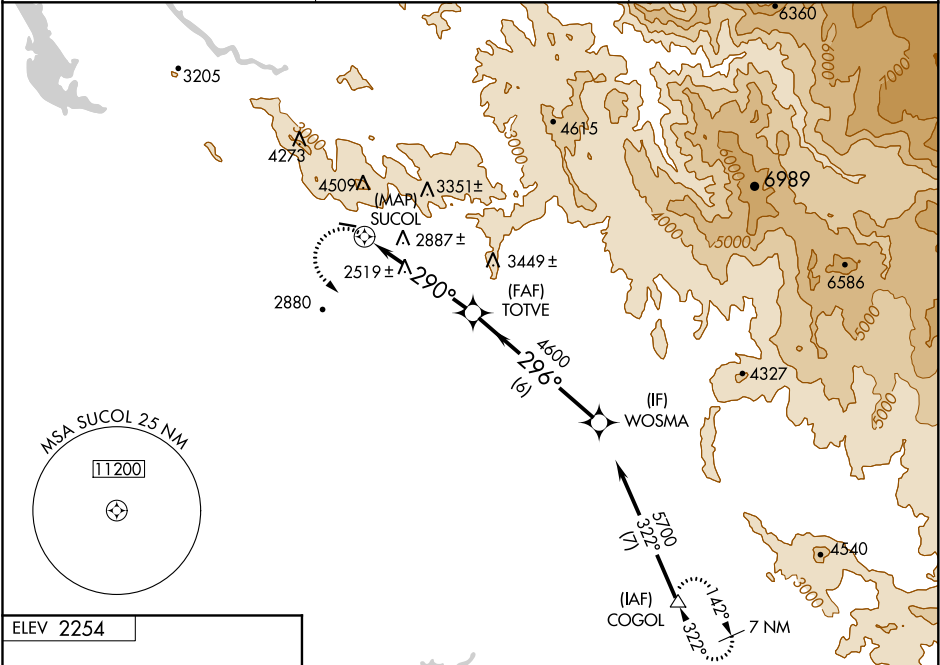


APP CRS <b>290°</b>	Rwy Idg TDZE Apt Elev	<b>N/A</b> <b>N/A</b> <b>2254</b>	<b>RNAV (GPS)-A</b> MARIPOSA-YOSEMITE (MPI)
------------------------	-----------------------------	---	--

<div><div>▽</div><div>NA</div></div> <div>DME/DME RNP-0.3 NA. Circling NA north of Rwy 8-26. Procedure NA at night. When local altimeter setting not received, use Atwater altimeter setting and increase all MDA 360 feet.</div>	MISSED APPROACH: Climbing left turn to 7000 direct COGOL and hold.
---	--

AWOS-3 <b>135.6</b>	OAKLAND CENTER <b>121.25 327.0</b>	UNICOM <b>122.7 (CTAF) 0</b>
------------------------	---------------------------------------	---------------------------------



Procedure NA for arrival at COGOL via V459 southeast bound.

