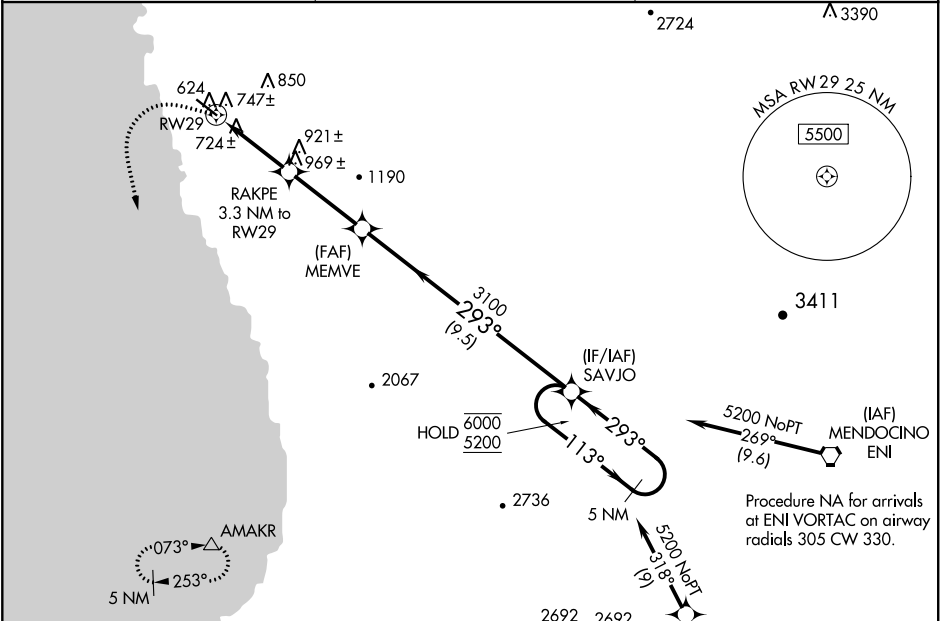


WAAS CH <b>77829</b> <b>W29A</b>	APP CRS <b>293°</b>	Rwy Idg TDZE Apt Elev	<b>5249</b> <b>574</b> <b>574</b>
--	------------------------	-----------------------------	---

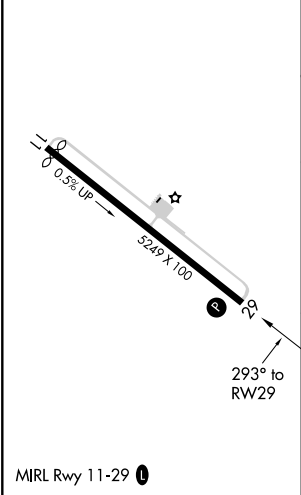
RNAV (GPS) RWY 29  
LITTLE RIVER (LLR)

RNP APCH.	MISSED APPROACH: Climbing left turn to 6000 direct AMAKR and hold, continue climb-in-hold to 6000.
<div><div>▼</div><div>▲</div></div> <div>Circling NA northeast of Rwy 11-29. Procedure NA at night. Rwy 29 helicopter visibility reduction below 1 SM NA.</div>	

AWOS-AV <b>121.125</b>	OAKLAND CENTER <b>132.2 350.3</b>	AUNICOM <b>122.7 (CTAF) 0</b>
---------------------------	--------------------------------------	----------------------------------



ELEV 574	TDZE 574
----------	----------



6000 AMAKR		VGSI and descent angles not coincident (VGSI Angle 3.50/TCH 42).		5 NM Holding Pattern	
RAKPE 3.3 NM to RW29		MEMVE		SAVJO	
RW29		3100		113° → 6000	
3.3 NM		3.3 NM		← 293° 5200	
CATEGORY		A		B	
LP MDA		980-1		406 (500-1)	
LNAV MDA		1000-1		426 (500-1)	
CIRCLING		1040-1		466 (500-1)	
		C		D	
		1080-1 1/2		1400-2 3/4	
		506 (600-1 1/2)		826 (900-2 3/4)	

SW-2, 31 DEC 2020 to 28 JAN 2021

SW-2, 31 DEC 2020 to 28 JAN 2021