

LOC/DME I-BFL	APP CRS	Rwy Idg	7429
111.9	301°	TDZE	493
Chan 56		Apt Elev	510

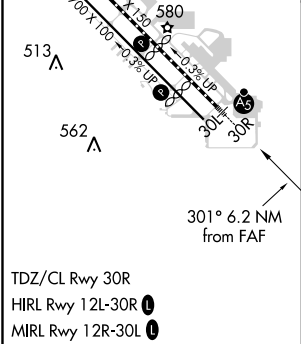
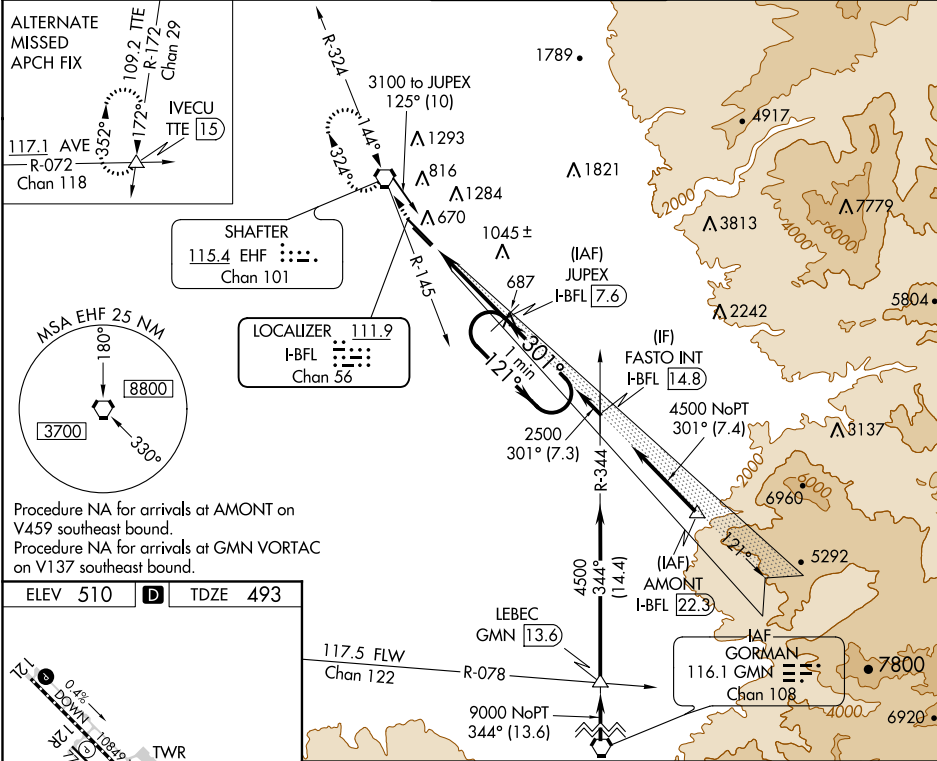
ILS or LOC RWY 30R

MEADOWS FIELD (BFL)

⚠ Circling NA northeast of Rwy 12L-30R. DME Required. VDP NA with Porterville altimeter setting. When local altimeter setting not received, use Porterville altimeter setting: increase DA to 790 and all visibilities to RVR 2200; increase all MDA 100 feet and visibility Cats C and D to RVR 6000. For inop ALS, increase S-LOC 30R Cat A and B visibility to RVR 5000. For inop ALS when using Porterville altimeter setting, increase S-ILS 30R all Cats visibility to RVR 5000.

MALSR
MISSED APPROACH: Climb to 1000 then climbing right turn to 3000 on EHF VORTAC R-145 direct EHF VORTAC and hold, continue climb-in-hold to 3000.

ATIS 118.6	BAKERSFIELD APP CON ★ 118.8 284.625 (SOUTH) 118.9 270.3 (NORTH)	BAKERSFIELD TOWER ★ 118.1 (CTAF) 257.8	GND CON 121.7	UNICOM 122.95
----------------------	---	--	-------------------------	-------------------------



1000	3000	EHF	Use I-BFL DME when on the localizer course.	JUPEX I-BFL 7.6	One Minute Holding Pattern
↑	EHF R-145	⬇		2500	
* LOC only	I-BFL 1.4	* I-BFL 2.6		121°	2500
	1.2 NM	5 NM		301°	2500
				GS 3.00°	TCH 51
CATEGORY	A	B	C	D	
S-ILS 30R		698/18	205 (200-½)		
S-LOC 30R	940/24	447 (500-½)	940/45	447 (500-¾)	
CIRCLING	960-1	450 (500-1)	960-1½	1060-2	
			450 (500-½)	550 (600-2)	