

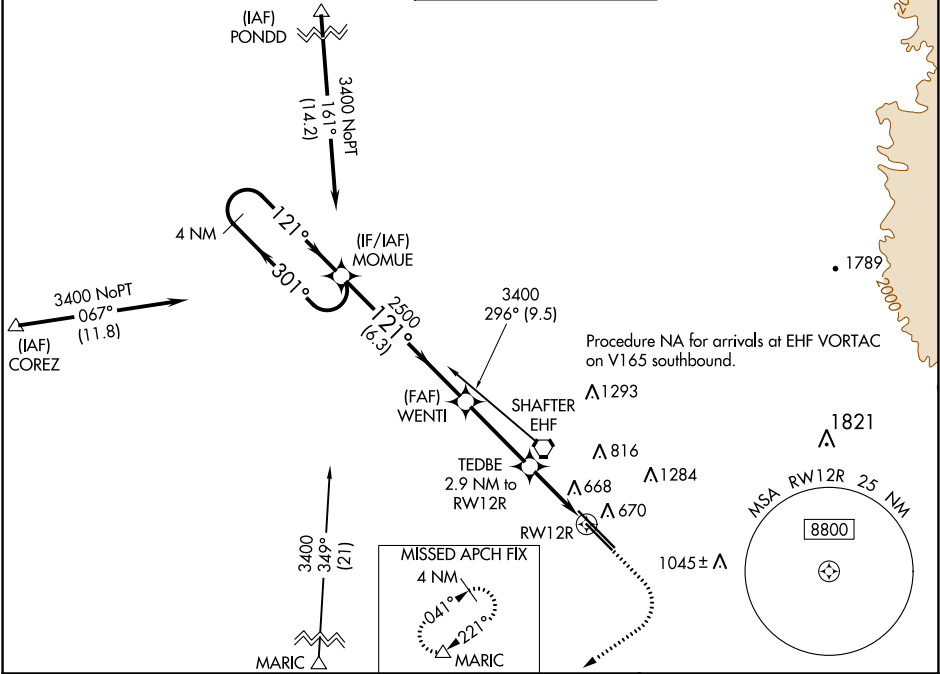
WAAS CH 61040 W12B	APP CRS 121°	Rwy Idg TDZE 7700 488 Apt Elev 510
--	------------------------	--

RNAV (GPS) RWY 12R

MEADOWS FIELD (BFL)

▼ For uncompensated Baro-VNAV systems, LNAV/VNAV NA below -1°C (31°F) or above 54°C (130°F). Circling NA northeast of Rwy 12L-30R. DME/DME RNP-0.3 NA.	MISSED APPROACH: Climb to 1000 then climbing right turn to 3500 direct MARIC and hold.
--	--

ATIS 118.6	BAKERSFIELD APP CON ★ 118.8 284.625 118.9 270.3 (SOUTH) (NORTH)	BAKERSFIELD TOWER ★ 118.1 (CTAF) 0 257.8	GND CON 121.7	UNICOM 122.95
----------------------	--	--	-------------------------	-------------------------



VGSI and RNAV glidepath not coincident (VGSI Angle 3.00/TCH 25).				1000 ↑	3500 ↷	MARIC △	ELEV 510	D	TDZE 488
4 NM Holding Pattern MOMUE				* LNAV only					
3400 ← 301° 121° →				WENTI 2500					
GP 3.00° TCH 50				TEDBE 2.9 NM to RW12R					
2500				* 1.3 NM to RW12R					
6.3 NM				RW12R					
3.3 NM				* 1440					
1.6 NM				1.3 NM					
CATEGORY				A B C D					
LPV DA				738-3/4 250 (300-3/4)					
LNAV/VNAV DA				969-15/8 481 (500-15/8)					
LNAV MDA				920-1 432 (500-1) 920-11/4 432 (500-11/4)					
C CIRCLING				960-1 450 (500-1) 960-11/2 450 (500-11/2) 1060-2 550 (600-2)					