

| | | |
|--|------------------------|--|
| WAAS CH 58118 W30A | APP CRS 301° | Rwy ldg TDZE 7429 493 Apt Elev 510 |
|--|------------------------|--|

RNAV (GPS) RWY 30R
MEADOWS FIELD (BFL)

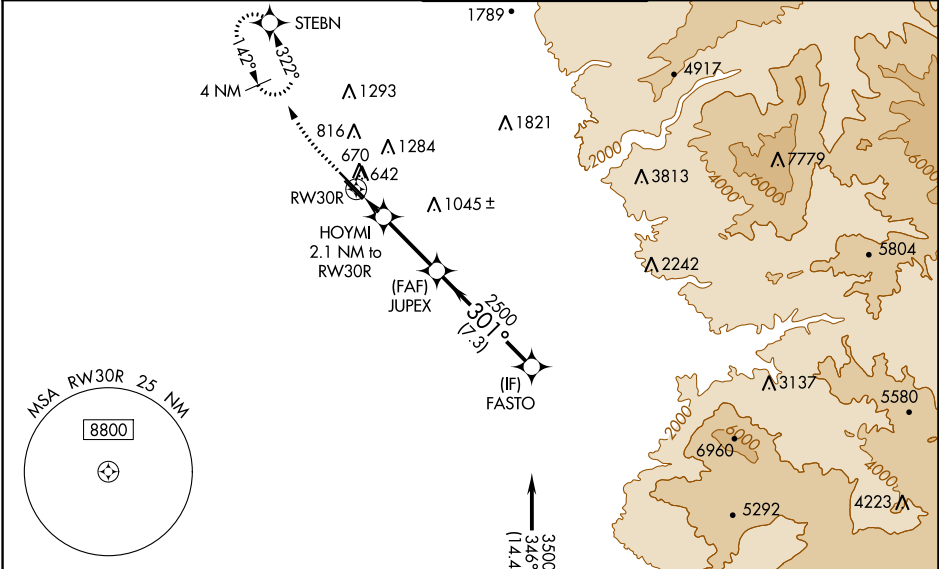
RNP APCH.

▼ For uncompensated Baro-VNAV systems, LNAV/VNAV NA below 0°C (32°F) or above 54°C (130°F). Circling NA northeast of Rwy 12L-30R. When local altimeter setting not received, use Porterville altimeter setting: increase LPV DA to 790, LNAV/VNAV DA to 990. Increase LNAV/VNAV all Cats visibilities to 1¼ mile; increase all MDA 100 feet and LNAV visibility Cats C and D to RVR 5000. VDP and Baro-VNAV NA when using Porterville altimeter setting. For inop ALS when using Porterville altimeter setting, increase LPV all Cats visibility to RVR 5000 and LNAV Cat C and D visibility to 1%. # RVR 2400 when using Porterville altimeter setting.

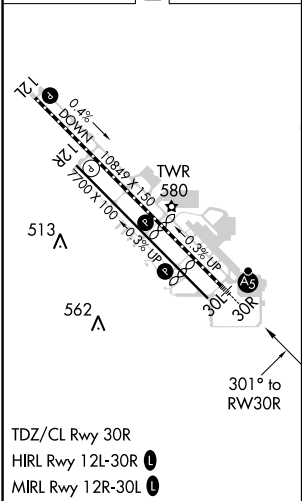
MALSR






MISSED APPROACH:
Climb to 1000 then climbing right turn to 3000 direct STEBN and hold.

| | | | | |
|----------------------|--|--|-------------------------|-------------------------|
| ATIS 118.6 | BAKERSFIELD APP CON ★ 118.8 284.625 118.9 270.3 (SOUTH) (NORTH) | BAKERSFIELD TOWER ★ 118.1 (CTAF) 0 257.8 | GND CON 121.7 | UNICOM 122.95 |
|----------------------|--|--|-------------------------|-------------------------|



| | | |
|-----------------|----------|-----------------|
| ELEV 510 | D | TDZE 493 |
|-----------------|----------|-----------------|



| | | | | | |
|--|--|--|--|--|--|
|  1000 | |  3000 |  STEBN | Procedure NA for arrivals at GRAPE on V23 southern bound | |
| *LNAV only | | *1.1 NM to RW30R | | HOYMI 2.1 NM to RW30R | |
|  RW30R | |  1200* | | JUPEX 2500 | |
| 1.1 NM | | 1 NM | | 4.1 NM | |
| CATEGORY | | A | | B | |
| LPV DA# | | 698/18 | | 205 (200-½) | |
| LNAV/VNAV DA | | 898/45 | | 405 (400-¾) | |
| LNAV MDA | | 880/24 | | 880/35 | |
| CIRCLING | | 960-1 | | 960-1½ | |
| | | 450 (500-1) | | 450 (500-1½) | |
| | | | | 1060-2 | |
| | | | | 550 (600-2) | |