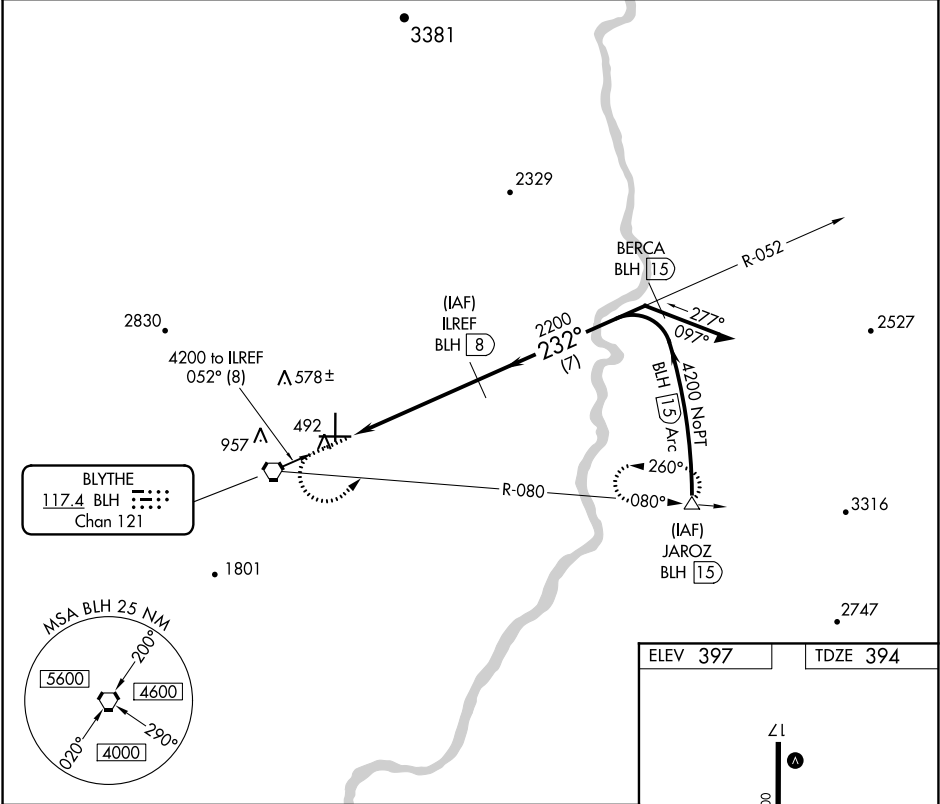


VORTAC BLH	APP CRS	Rwy Idg	6543
117.4	232°	TDZE	394
Chan 121		Apt Elev	397

VOR/DME RWY 26
BLYTHE (BLH)

MISSED APPROACH: Climb to 1200 then climbing left turn to 4600 via BLH VORTAC R-080 to JAROZ/1.5 DME and hold.

ASOS 120.175	LOS ANGELES CENTER 128.15 285.6	UNICOM 122.8 (CTAF) 0
-----------------	------------------------------------	--------------------------



1200

4600

JAROZ

BLH

R-080

VGSI and descent angle not coincident
(VGSI Angle 3.00/TCH 42).

BLH

3

ILREF

BLH

8

Remain within 10 NM

052°

232°

4200

2200

3.34°

TCH 42

5 NM

ELEV 397

TDZE 394

26

232° 5 NM from FAF

445

492

35

6543 X 150

9800 X 100

26

MIRL Rwy 8-26 and 17-35 0

SW-3, 31 DEC 2020 to 28 JAN 2021

SW-3, 31 DEC 2020 to 28 JAN 2021