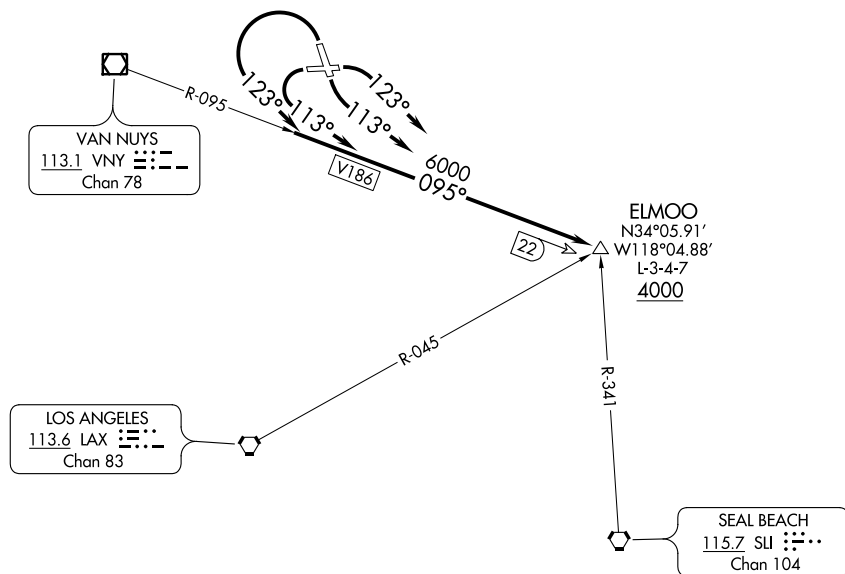


CLNC DEL	118.0	348.6
CPDLC		
SOCAL DEP CON	135.05	317.5

**TOP ALTITUDE:
ASSIGNED BY ATC**



TAKEOFF MINIMUMS

Rwy 8: Standard with minimum climb of 380' per NM to 2500.
Rwy 15: Standard with minimum climb of 450' per NM to 3000.
Rwy 26: Standard with minimum climb of 305' per NM to 2600.
Rwy 33: 600-2¼ with minimum climb of 210' per NM to 4000
or standard with minimum climb of 450' per NM to 2600.

NOTE: Chart not to scale.

DEPARTURE ROUTE DESCRIPTION

TAKEOFF RUNWAY 8: Climbing right turn heading 123° intercept VNY VOR/DME R-095 to ELMOO. . . .

TAKEOFF RUNWAY 15: Climbing left turn heading 113° intercept VNY VOR/DME R-095 to ELMOO. . . .

TAKEOFF RUNWAY 26: Climbing left turn heading 113° intercept VNY VOR/DME R-095 to ELMOO. . . .

TAKEOFF RUNWAY 33: Climbing left turn heading 123° intercept VNY VOR/DME R-095 to ELMOO.....

...thence via assigned route. Maintain ATC assigned altitude.