

COPTER TACAN RWY 27

TACAN NRS Chan 29	APCH CRS 258°	Rwy Idg 4997 THRE 20 Arpt Elev 24
-----------------------------	-------------------------	--

AL-307 [USN]

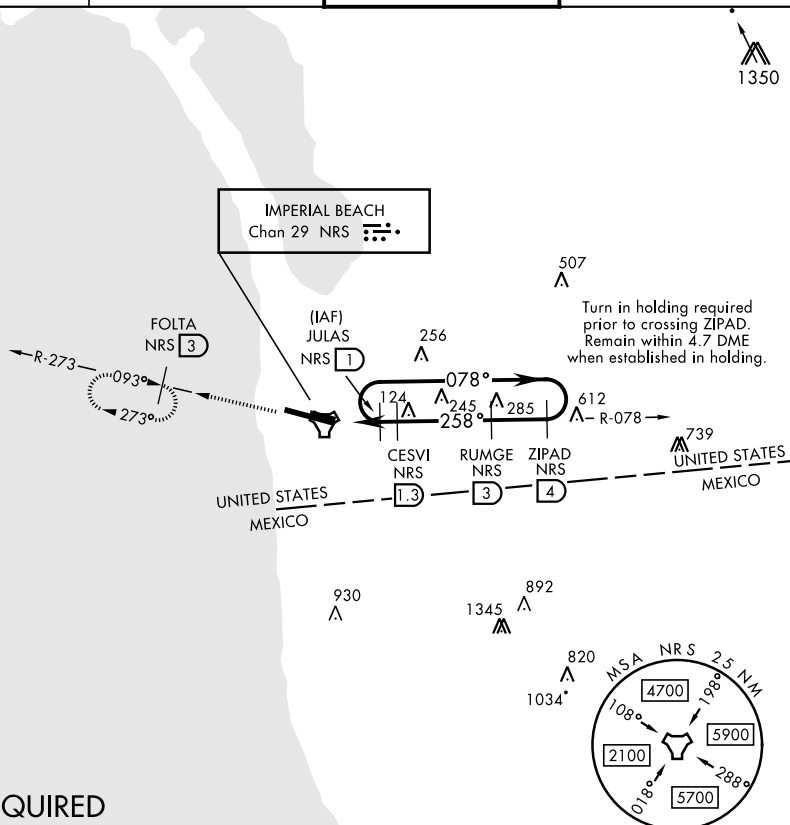
IMPERIAL BEACH NOLF (REAM FIELD) (KNRS)



Max airspeed 90 KIAS.

MISSED APPROACH: Climb to 1600 via NRS TACAN R-078 to NRS, then via NRS R-273 to FOLTA, continue climb-in-hold to 1600. Remain within 5.2 DME when established in holding.

ATIS ★ /ASOS 276.2	SOCAL APP CON 125.15 317.55	IMPERIAL BEACH TOWER ★ 120.65 239.25	GND CON 285.575
------------------------------	---------------------------------------	--	---------------------------



RADAR REQUIRED

EMERGENCY SAFE ALT 100 NM 13,600

