

HI-ILS or LOC/DME RWY 25

LOC I-PMD 110.7	APCH CRS 254°	Rwy Idg 12,002 TDZE 2503 Arpt Elev 2543
---------------------------	-------------------------	--

JAL-310 [USAF]

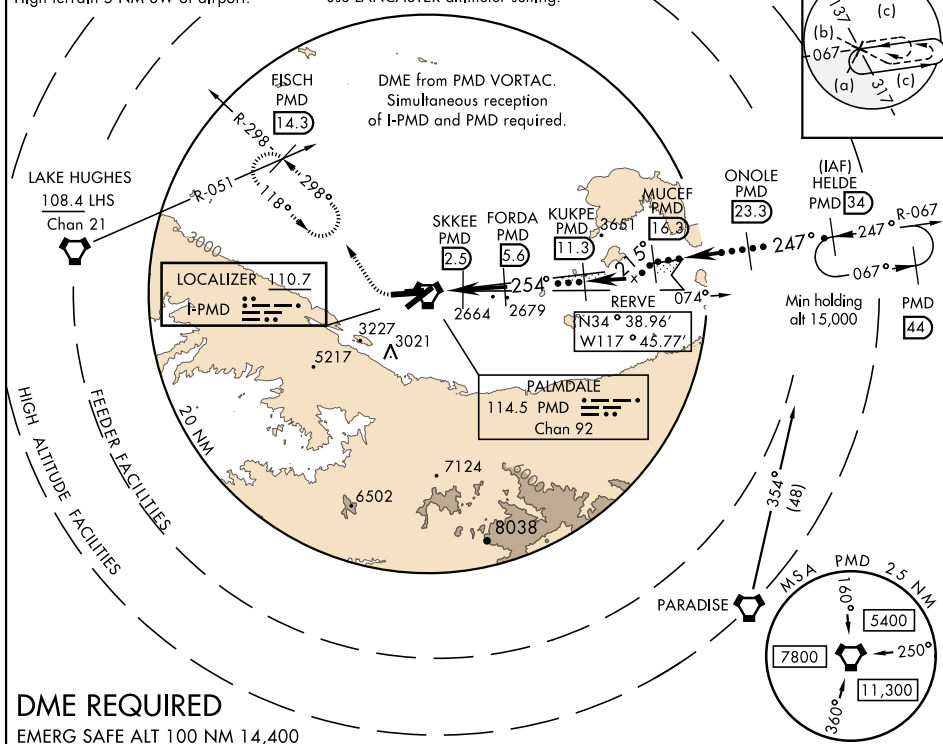
PALMDALE USAF PLANT 42 (KPMD)

<p>⚠ * Circling NA south of Rws 4 and 25.</p>	<p>MISSED APPROACH: Climb to 3000 then climbing right turn on heading 318° and PMD VORTAC R-298 to FISCH INT/PMD 14.3 DME/RADAR and hold, continue climb-in-hold to 6700.</p>
--	---

ATIS 118.275	JOSHUA APP CON 124.55 363.0	PALMDALE TOWER ★ 123.7 (CTAF) 0 317.6	GND CON 121.9 348.6
------------------------	---------------------------------------	---	-------------------------------

CAUTION:
High terrain 5 NM SW of airport.

When local altimeter setting not received,
use LANCASTER altimeter setting.



DME REQUIRED

EMERG SAFE ALT 100 NM 14,400

3000

↑

6700

hdg 318°

PMD

R-298

† LOC only

MUCEF

ONOLE

HELDE

R-067

KUKPE

11.3

23.3

34

FL 180

15,000

VGSI and descent angles not coincident.

FORDA

5.6

SKKEE

2.3

VORTAC

254°

215°

247°

6000

8600

12,000

GS 3.00°

TCH 63

5

3500

4500

0.5 NM

2.5 NM

3.1 NM

CATEGORY	C	D	E
S-ILS 25	2703-¾	200 (200-¾)	
S-LOC 25	2820-7/8	317 (300-¾)	
CIRCLING *	3140-1½ 597 (600-1½)	3740-3 1197 (1200-3)	3760-3 1217 (1300-3)

ELEV 2543

TDZE 2503

ASSAULT STRIP

072° 252°

0.3% UP 0.6% UP

12,002 x 200

12001 x 150

TWR 2626

2640

2699

REIL Rwy 4-22, 7-25 0

HIRL Rwy 4-22, 7-25 0

FAF to MAP 6.1 NM

254° 6.1 NM from FAF

PALMDALE, CALIFORNIA

34°38'N-118°05'W

PALMDALE USAF PLANT 42 (KPMD)

Amdt 5 21JUN18

HI-ILS or LOC/DME RWY 25