

HI-TACAN RWY 25

TACAN PMD Chan 92	APCH CRS 265°	Rwy Idg 12,002 TDZE 2503 Arpt Elev 2543
-----------------------------	-------------------------	--

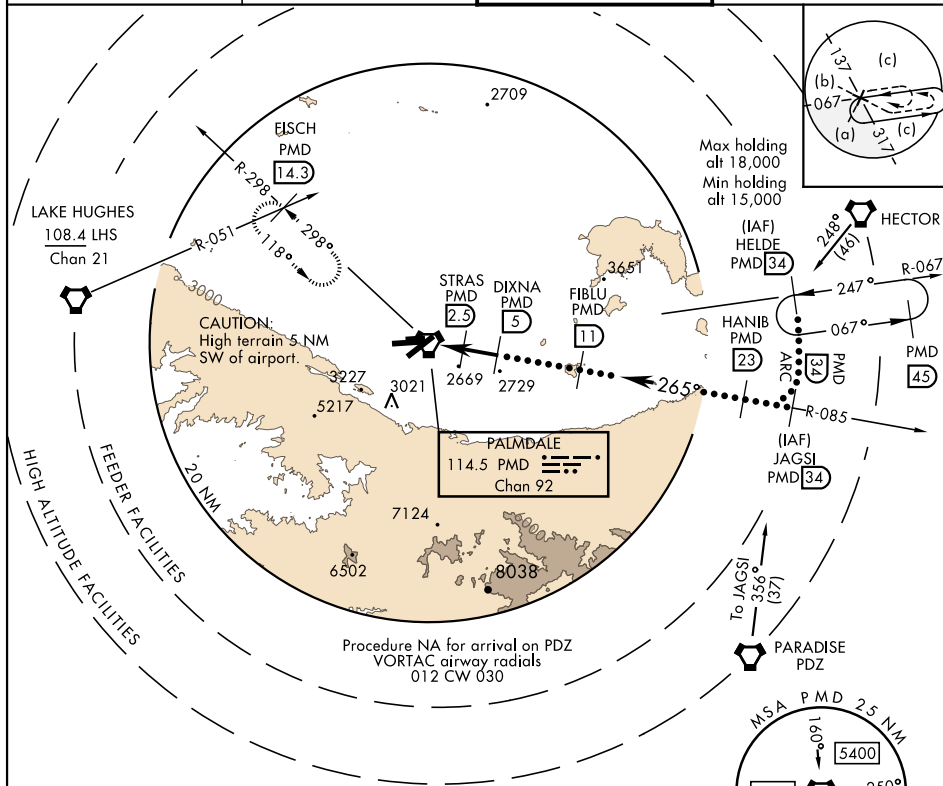
JAL-310 [USAF]

PALMDALE USAF PLANT 42 (KPMD)

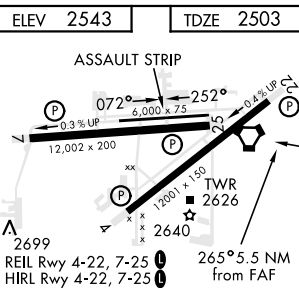
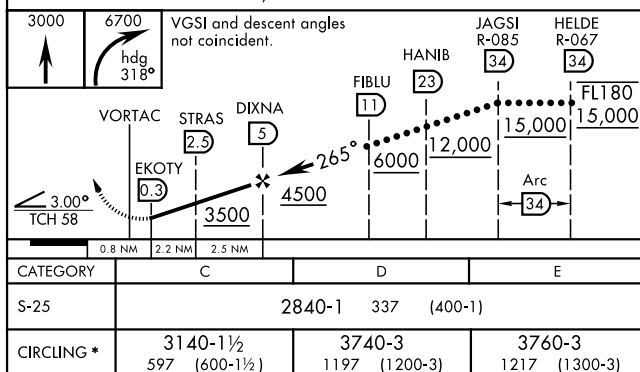
 * Circling NA S of Rwy 4 and 25.

MISSED APPROACH: Climb to 3000 then climbing right turn to 6700 on heading 318° on PMD VORTAC R-298 to FISCH INT/PMD 14.3 DME/RADAR and hold, continue climb-in-hold to 6700.

ATIS 118.275	JOSHUA APP CON 124.55 363.0	PALMDALE TOWER ★ 123.7 (CTAF) 0 317.6	GND CON 121.9 348.6
-----------------	--------------------------------	--	------------------------



EMERG SAFE ALT 100 NM 14,400



PALMDALE, CALIFORNIA

34°38'N-118°05'W

PALMDALE USAF PLANT 42 (KPMD)

Amdt 2 16AUG18

HI-TACAN RWY 25

SW-3, 31 DEC 2020 to 28 JAN 2021

SW-3, 31 DEC 2020 to 28 JAN 2021