

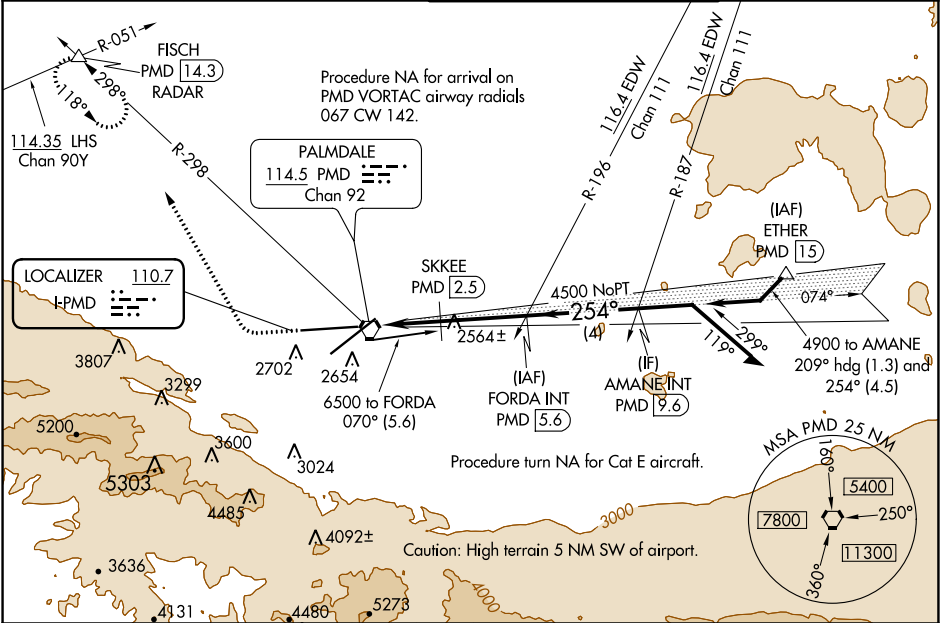
LOC I-PMD <b>110.7</b>	APP CRS <b>254°</b>	Rwy Idg TDZE Apt Elev <b>12002</b> <b>2503</b> <b>2543</b>
---------------------------	------------------------	---

ILS or LOC RWY 25  
PALMDALE USAF PLANT 42 (PMD)

**▼** DME from PMD VORTAC.  
**▲** Simultaneous reception of I-PMD and PMD DME required.  
Circling NA for Cats C, D, and E south of Rwy 4 and 25.

MISSED APPROACH: Climb to 3000 then climbing right turn to 6700 on heading 318° and on PMD VORTAC R-298 to FISCH INT/PMD 14.3 DME/RADAR and hold, continue climb-in-hold to 6700.

ATIS <b>118.275</b>	JOSHUA APP CON <b>124.55 363.0</b>	PALMDALE TOWER ★ <b>123.7 (CTAF) 0 317.6</b>	GND CON <b>121.9 317.6</b>
------------------------	---------------------------------------	---	-------------------------------



ELEV 2543	TDZE 2503	3000	6700	PMD R-298	FISCH	FORDA INT PMD 5.6	Remain within 10 NM
<p>VGSI and ILS glidepath not coincident (VGSI Angle 3.00/TCH 76). *LOC only.</p>							
<p>ASSAULT STRIP 6000 X 75 12002 X 200 0.5% DOWN 0.72% UP 0.5% DOWN 0.5% UP 2626 2640</p>							
<p>REIL Rwy 4, 7, 22 and 25 HIRL Rwy 4-22 and 7-25</p>							
FAF to MAP 6.1 NM							
Knots	60	90	120	150	180		
Min:Sec	6:06	4:04	3:03	2:26	2:02		
CATEGORY	A	B	C	D	E		
S-ILS 25	2703-¾ 200 (200-¾)						
S-LOC 25	3500-1¼ 997 (1000-1¼)	3500-1½ 997 (1000-1½)	3500-3 997 (1000-3)				
CIRCLING	3500-1¼ 957 (1000-1¼)	3500-1½ 957 (1000-1½)	3500-3 957 (1000-3)	3740-3 1197 (1200-3)	3760-3 1217 (1300-3)		
SKKEE FIX MINIMUMS (DME REQUIRED)							
S-LOC 25	2820-1 317 (300-1)		2820-⅞ 317 (300-⅞)				
CIRCLING	3020-1 477 (500-1)	3060-1 517 (600-1)	3140-1½ 597 (600-1½)	3740-3 1197 (1200-3)	3760-3 1217 (1300-3)		

SW-3, 31 DEC 2020 to 28 JAN 2021

SW-3, 31 DEC 2020 to 28 JAN 2021