

RIVERSIDE, CALIFORNIA

RNAV (GPS) RWY 14

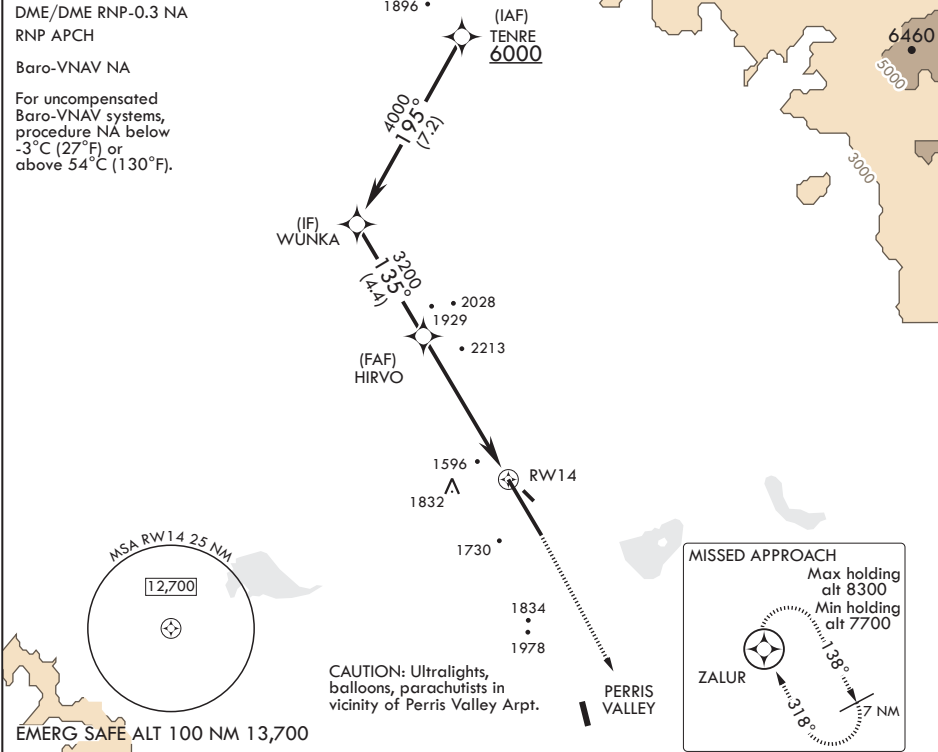
WAAS CH 91363 W14A	APCH CRS 135°	Rwy Idg TDZE Arprt Elev	13,302 1536 1536
--------------------------	------------------	-------------------------------	------------------------

AL-348 (USAF)

MARCH ARB (KRIV)

✈ * Circling NA NE of Rwy 14-32. Rapid rising terrain.	MISSED APPROACH: Climb to 2300 then climbing right turn direct ZALUR and hold, continue climb in hold to 7700.
--	--

ATIS 134.75 239.05	SOCAL APP CON/DEP CON 134.0 278.3	TOWER 127.65 253.5	GND CON 121.75 335.8	CLNC DEL 121.75 335.8
-----------------------	--------------------------------------	-----------------------	-------------------------	--------------------------



TENRE	6000	195°	WUNKA	4000	135°	HIRVO	3200	5.6 NM	RW14	2300	7700	ZALUR	ELEV 1536	TDZE 1536
GP 2.70° TCH 56														
† LNAV only														
† 2.8 NM to RW14														
CATEGORY	A		B		C		D							
LPV DA	1756/40		220		(300-¾)									
LNAV/VNAV DA	2080-1½		544		(600-1½)									
LNAV MDA	2380/55 844 (900-1)		2380-1¼ 844 (900-1¼)		2380-2½ 844 (900-2½)									
CIRCLING*	2380-1¼ 844 (900-1¼)				2380-2½ 844 (900-2½)		2440-3 904 (1000-3)		HIRL Rwy 14-32					

RIVERSIDE, CALIFORNIA

33°53'N - 117°16'W

MARCH ARB (KRIV)

AmDt 7 31JAN19
TERPS

RNAV (GPS) RWY 14

SW-3, 31 DEC 2020 to 28 JAN 2021

SW-3, 31 DEC 2020 to 28 JAN 2021