

VOR Y RWY 32

VOR HDF 113.4	APCH CRS 315°	Rwy Idg 13,302 TDZE 1497 Arpt Elev 1536	AL-348 [USAF]	MARCH ARB (KRIV)
------------------	------------------	---	---------------	------------------

⚠ *When ALS inop, increase CAT AB RVR to 60 and vis to 1 1/8 mile, CAT CDE vis to 1 1/8 miles.

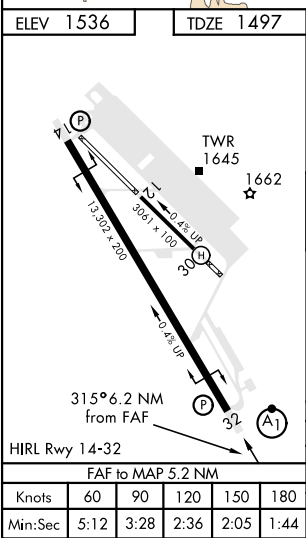
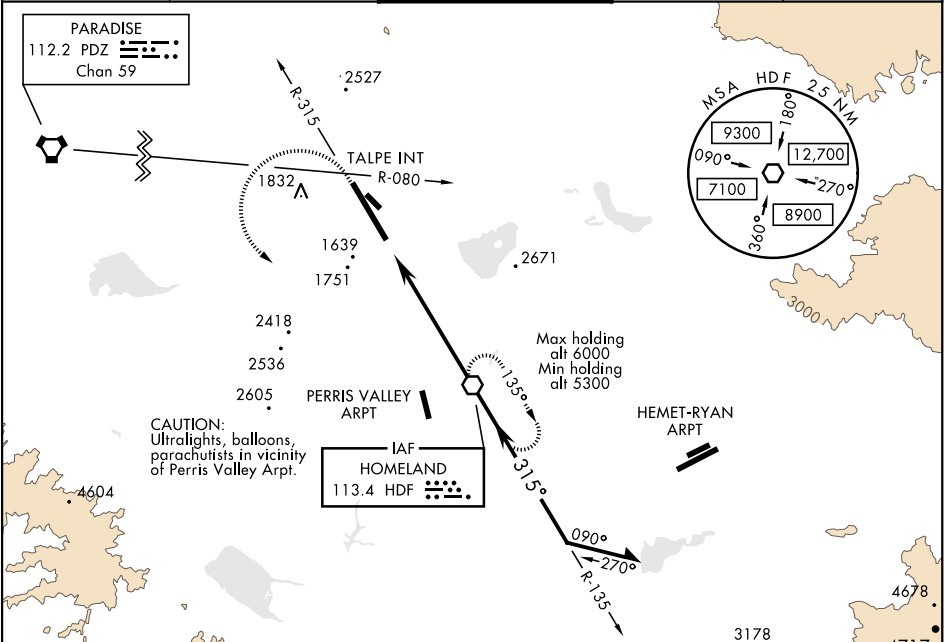
** Circling not authorized NE of Rwy 14-32. Rapid rising terrain.

ALSF-1

(A1)

MISSED APPROACH: Climb to 5300 on HDF VOR R-315 to TALPE, then turn left direct HDF continue climb-in-hold to 5300.

ATIS 134.75 239.05	SOCAL APP CON 134.0 278.3	MARCH TOWER 127.65 253.5	GND CON 121.75 335.8	CLNC DEL 121.75 335.8
-----------------------	------------------------------	-----------------------------	-------------------------	--------------------------



EMERG SAFE ALT 100 NM 13,700

5300	TALPE INT	HDF	HDF VOR	5300
HDF R-315				

VGSI and descent angles not coincident.

315° 3700

3.29° TCH 59

CATEGORY	A	B	C	D	E
S-32 *	2040/40 543 (600-3/4)		2040/60	543	(600-1 1/8)
CIRCLING **	2180-1 1/8 644 (700-1 1/8)	2260-1 1/8 724 (800-1 1/8)	2300-2 1/4 764 (800-2 1/4)	2440-3 904 (1000-3)	2840-3 1304 (1400-3)

VOR Y RWY 32

SW-3, 31 DEC 2020 to 28 JAN 2021

SW-3, 31 DEC 2020 to 28 JAN 2021