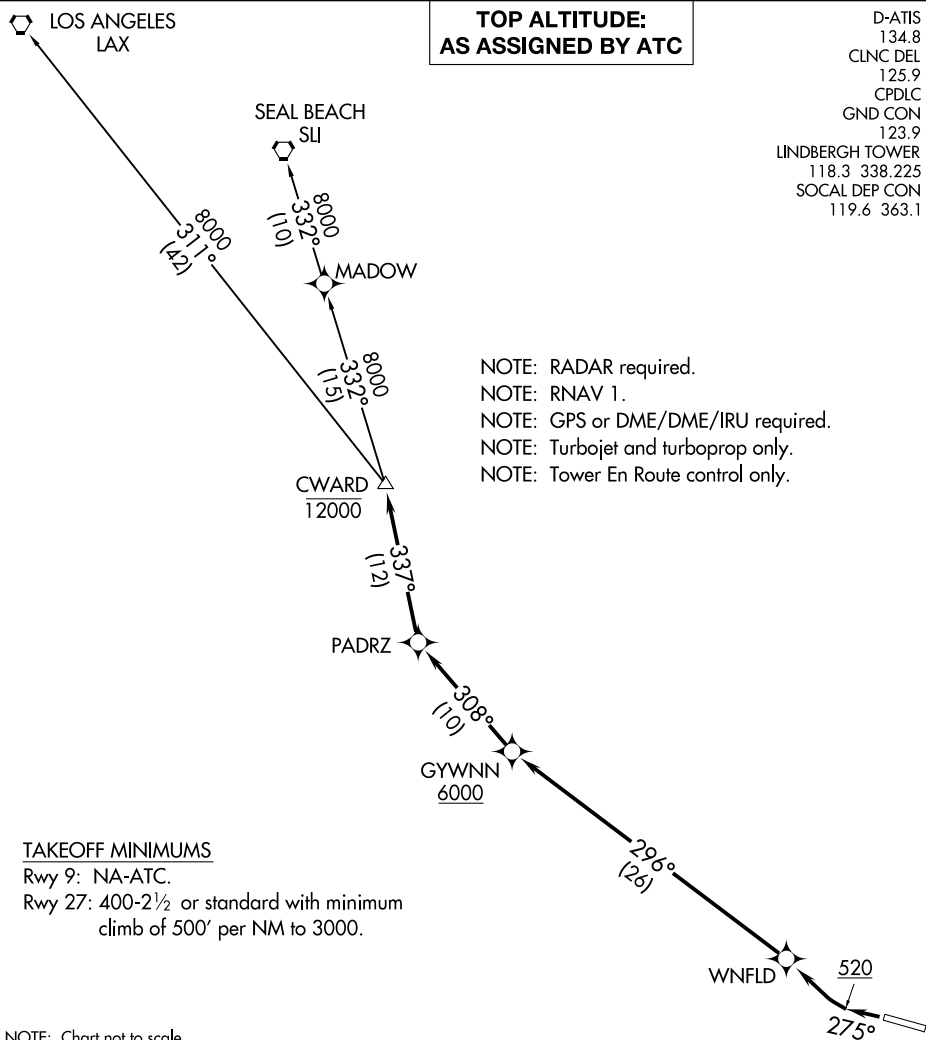


CWARD TWO DEPARTURE (RNAV)

SAN DIEGO INTL (SAN)
SAN DIEGO, CALIFORNIA



NOTE: Chart not to scale.

DEPARTURE ROUTE DESCRIPTION

TAKEOFF RUNWAY 27: Climb heading 275° to 520, then right turn direct WNFLD, then on track 296° to cross GYWNIN at or above 6000, then on track 308° to PADRZ, then on track 337° to cross CWARD at or below 12000, thence. . . .
 . . .on transition. Maintain ATC assigned altitude. Expect filed altitude 10 minutes after departure.

LOS ANGELES TRANSITION (CWARD2.LAX)
SEAL BEACH TRANSITION (CWARD2.SLI)

D-ATIS	134.8
CLNC DEL	125.9
CPDLC	
GND CON	123.9
LINDBERGH TOWER	118.3 338.225
SOCAL DEP CON	119.6 363.1

SW-3, 31 DEC 2020 to 28 JAN 2021

SW-3, 31 DEC 2020 to 28 JAN 2021

CWARD TWO DEPARTURE (RNAV)
(CWARD2.CWARD) 07DEC17

SAN DIEGO, CALIFORNIA
SAN DIEGO INTL (SAN)