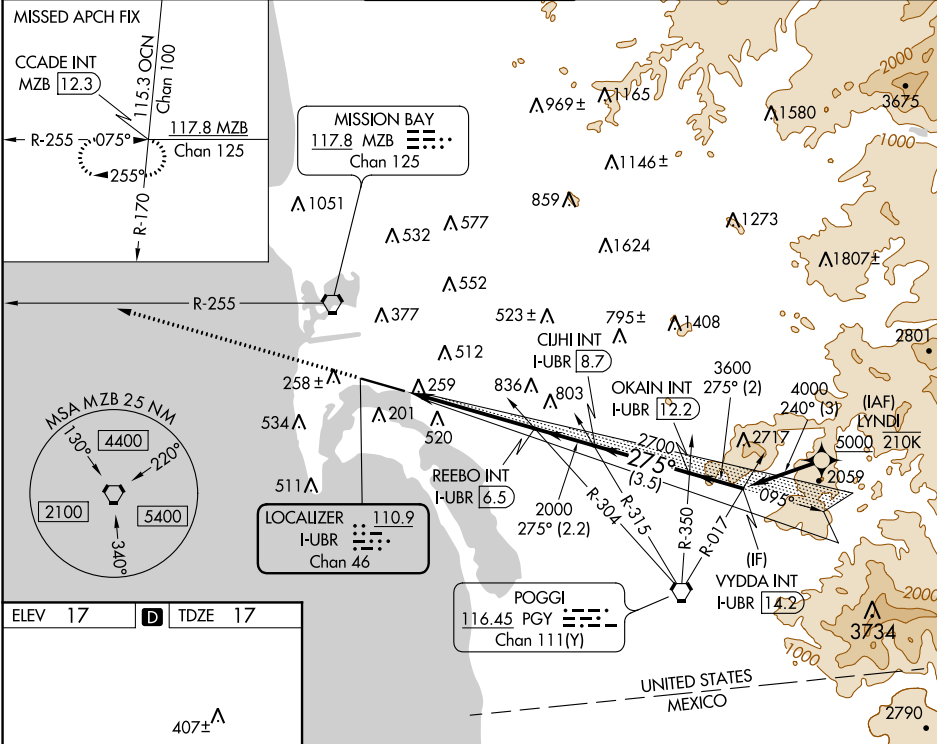


LOC/DME I-UBR	APP CRS	Rwy ldg	7590
110.9	275°	TDZE	17
Chan 46		Apt Elev	17

LOC RWY 27
SAN DIEGO INTL (SAN)

From LYNDI: RNAV 1-DME/DME/IRU or GPS required.		MAL5	MISSED APPROACH: Climb to 2500 on heading 275° and on MZB VORTAC R-255 to CCADE INT/MZB 12.3 DME and hold.
RNAV 1-DME/DME/IRU or GPS required for procedure entry.			
<div><div><div><div><div></div><div></div><div></div></div><div><div></div><div></div><div></div></div></div><div><div><div></div><div></div><div></div></div><div><div></div><div></div><div></div></div></div></div></div>	Rwy 27 helicopter visibility reduction below 1 SM NA. Circling NA north of Rwy 9-27. Inop table does not apply to Cats A and B. For inop ALS, increase S-27 Cats C and D visibility to 1 1/8 SM.		

D-ATIS 134.8	SOCAL APP CON 119.6 363.1 (WEST) 124.35 279.625 (EAST)	LINDBERGH TOWER 118.3 338.225	GND CON 123.9	CLNC DEL 125.9	CPDLC
-----------------	--	----------------------------------	------------------	-------------------	-------



ELEV 17	D	TDZE 17
407±		275° 5.2 NM from FAF
TWR 159		70
A175		A176
TDZ/CL Rwy 9 and 27		HIRL Rwy 9-27
FAF to MAP 5.2 NM		
Knots	60	90 120 150 180
Min:Sec	5:12	3:28 2:36 2:05 1:44
CIRCLING		
S-27		680-1 663 (700-1)
CIRCLING		820-1 803 (900-1)
S-27		680-1 3/4 663 (700-1 3/4)
CIRCLING		840-2 1/2 823 (900-2 1/2)
S-27		940-3 923 (1000-3)