

ARRIVAL ROUTE DESCRIPTION

HOGGZ TRANSITION (HOGGZ.LUCKI1)

IMPERIAL TRANSITION (IPL.LUCK11)

LVELL TRANSITION (LVELL.LUCKI1)

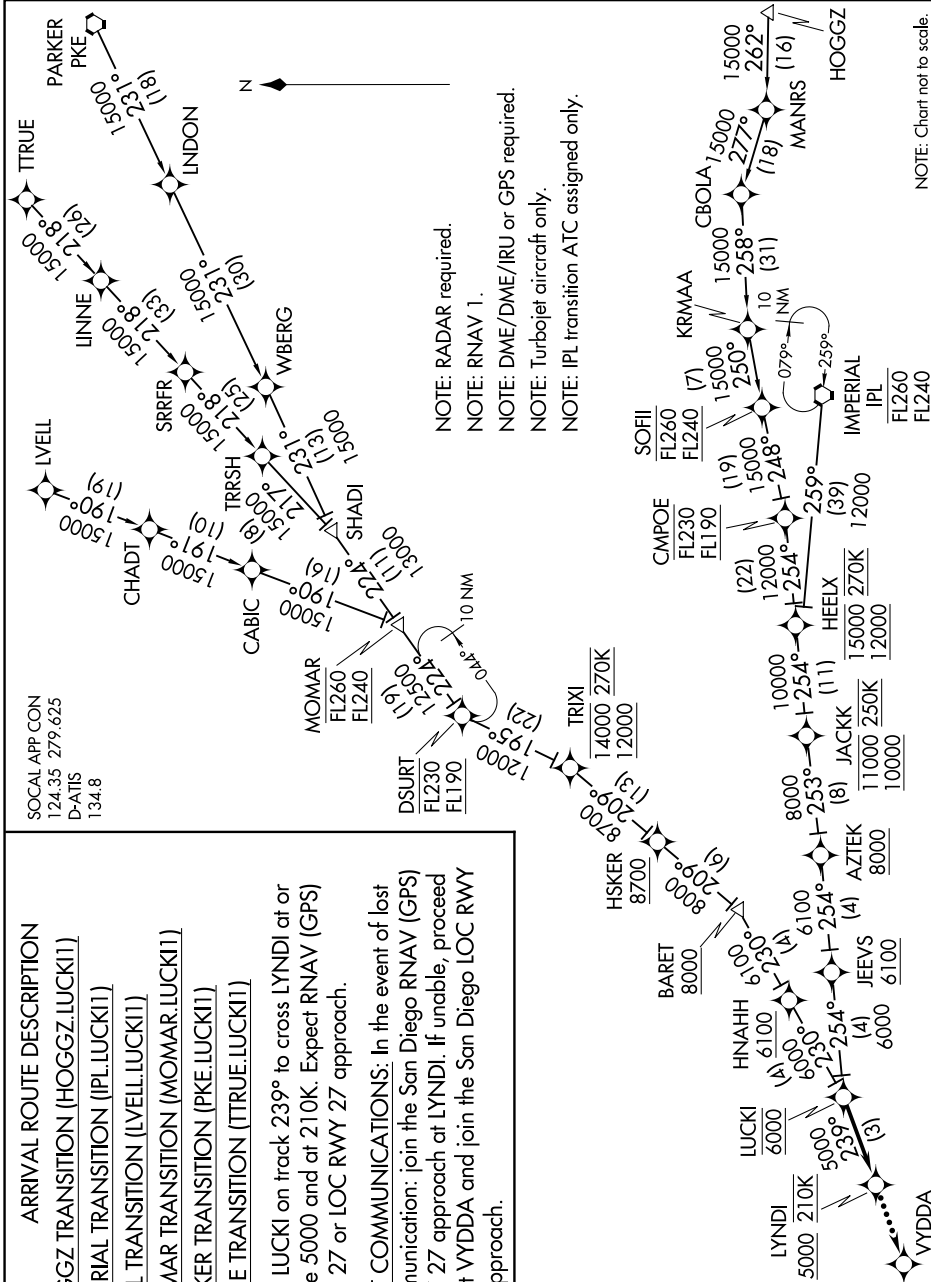
MOMAR TRANSITION (MOMAR.LUCKI1)

PARKER TRANSITION (PKE.LUCK11)

TRUE TRANSITION (TRUE.LUCKI1)

From LUCKI on track 239° to cross LYNDI at or above 5000 and at 210K. Expect RNAV (GPS) RWY 27 or LOC RWY 27 approach.

LOST COMMUNICATIONS: In the event of lost communication: join the San Diego RNAV (GPS) RWY 27 approach at LYNDI. If unable, proceed direct VYDDA and join the San Diego LOC RWY 27 approach.



NOTE: Chart not to scale.