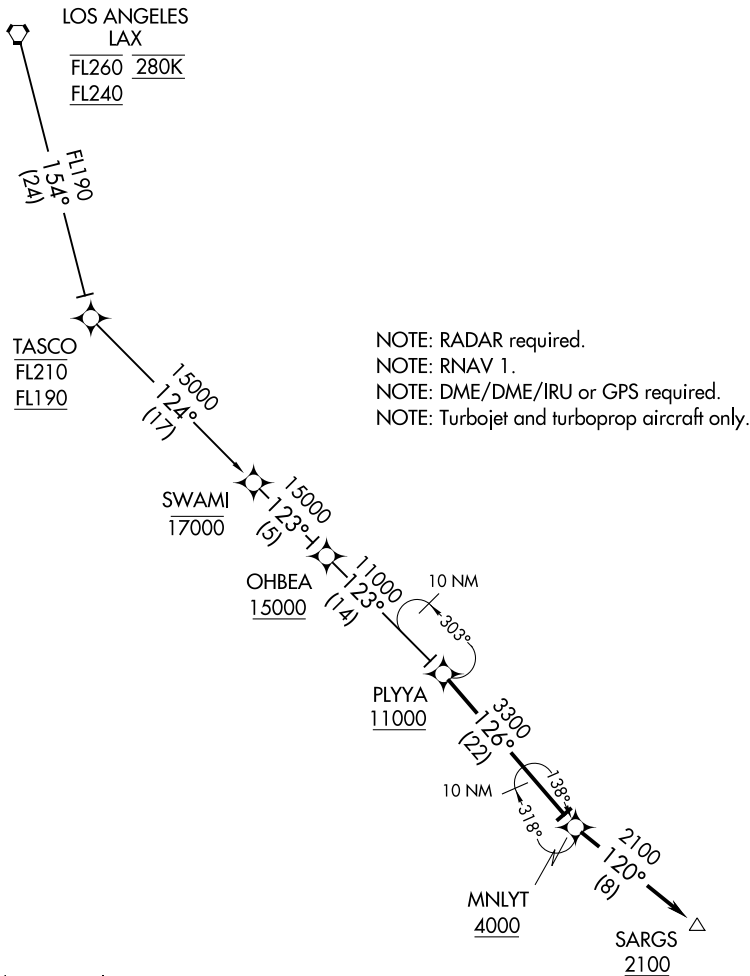


SOCAL APP CON
128.1 281.4
D-ATIS 134.8



NOTE: Chart not to scale.

ARRIVAL ROUTE DESCRIPTION

LOS ANGELES TRANSITION (LAX.PLYA1)

From PLYYA on track 126° to cross MNLYT at or above 4000.
LANDING RUNWAY 9: From MNLYT on track 120° to cross SARGS at or above 2100.
Expect ILS or LOC RWY 9 approach.