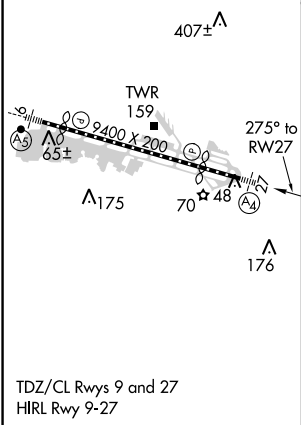
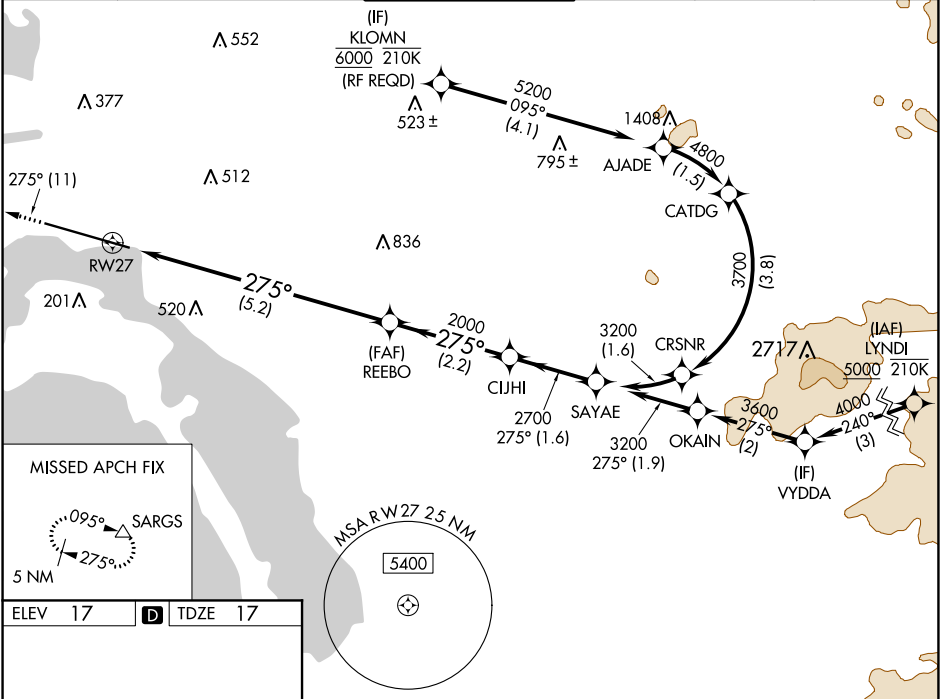


APP CRS	Rwy Idg	7590
275°	TDZE	17
	Apt Elev	17

RNAV (RNP) Z RWY 27  
SAN DIEGO INTL (SAN)

RNP AR APCH.	MALS	MISSED APPROACH: Climb to 2500 on track 275° to SARGs and hold.
▼ For uncompensated Baro-VNAV systems, procedure NA below 6°C or above 46°C. Straight-in Rwy 27 at night, operational VGSI required, remain on or above VGSI glidepath until threshold. For inop ALS, increase RNP 0.30 all Cnts visibility to 2½ SM.	Ⓐ	

D-ATIS 134.8	SOCAL APP CON 119.6 363.1 (WEST) 124.35 279.625 (EAST)	LINDBERGH TOWER 118.3 338.225	GND CON 123.9	CLNC DEL 125.9	CPDLC
-----------------	--	----------------------------------	------------------	-------------------	-------



2500	SARGS	See planview for multiple IF locations.		
↑ tr 275°	△			
CATEGORY	A	B	C	D
RNP 0.11 DA	617-1½ 600 (600-1½)			
RNP 0.30 DA	778-2 761 (800-2)			
AUTHORIZATION REQUIRED				

SW-3, 31 DEC 2020 to 28 JAN 2021

SW-3, 31 DEC 2020 to 28 JAN 2021