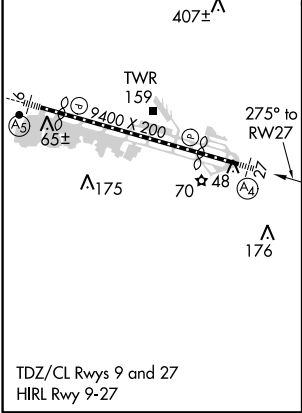
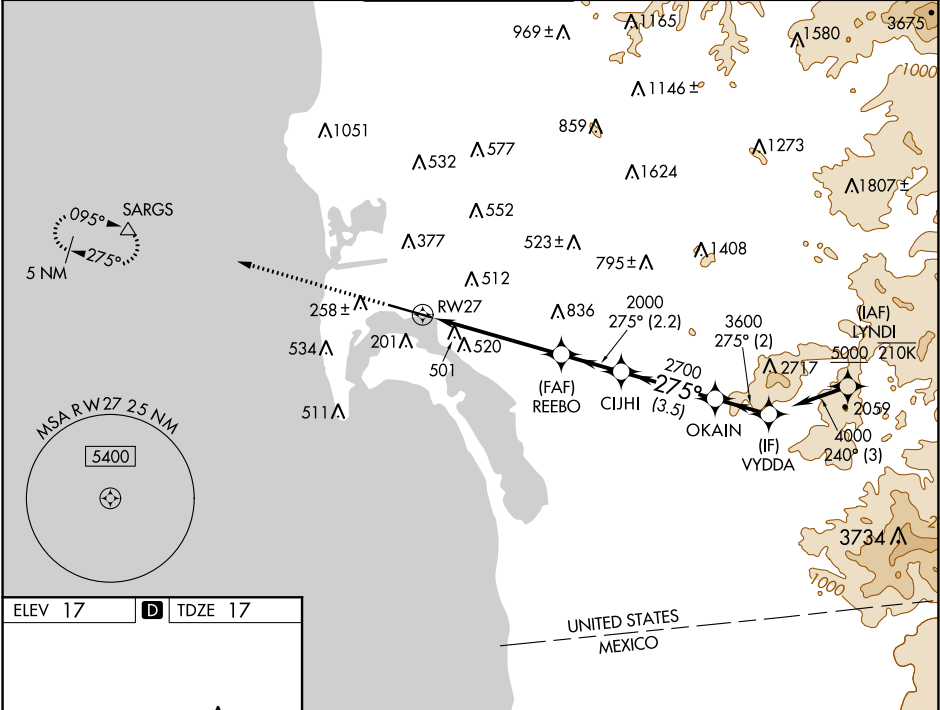


WAAS CH 82527 W27A	APP CRS 275°	Rwy Idg TDZE 17 Apt Elev 17
--	------------------------	---

RNAV (GPS) Y RWY 27
SAN DIEGO INTL (SAN)

RNP APCH. <div><div>▼</div><div>▲</div></div> <div>Rwy 27 helicopter visibility reduction below RVR 5000 NA. Straight-in Rwy 27 at night, operational VGSI required, remain on or above VGSI glidepath until threshold. Circling NA north of Rwy 9-27. For inop ALS, increase LNAV Cats C/D visibility to 2 SM. Inop table does not apply to LP Cats A/B and LNAV Cat A.</div>	MALS <div><div>Ⓜ</div><div>≡</div></div> <div>MISSED APPROACH: Climb to 2500 direct SARGs and hold.</div>
---	--

D-ATIS 134.8	SOCAL APP CON 119.6 363.1(WEST) 124.35 279.625(EAST)	LINDBERGH TOWER 118.3 338.225	GND CON 123.9	CLNC DEL 125.9	CPDLC
------------------------	--	---	-------------------------	--------------------------	-------



2500	SARGs	REEBO	CIJHI	OKAIN	VYDDA
2500	△	2000	2700	3600	4000
5.2 NM	2.2 NM	3.5 NM	2 NM		
CATEGORY	A	B	C	D	
LP MDA	680/50	663 (700-1)	680-1¾	663 (700-1¾)	
LNAV MDA	760/50 743 (800-1)	760/55 743 (800-1)	760-1⅞	743 (800-1⅞)	
CIRCLING	820-1 803 (900-1)	820-1¼ 803 (900-1¼)	820-2½ 803 (900-2½)	940-3 923 (1000-3)	

SW-3, 31 DEC 2020 to 28 JAN 2021

SW-3, 31 DEC 2020 to 28 JAN 2021