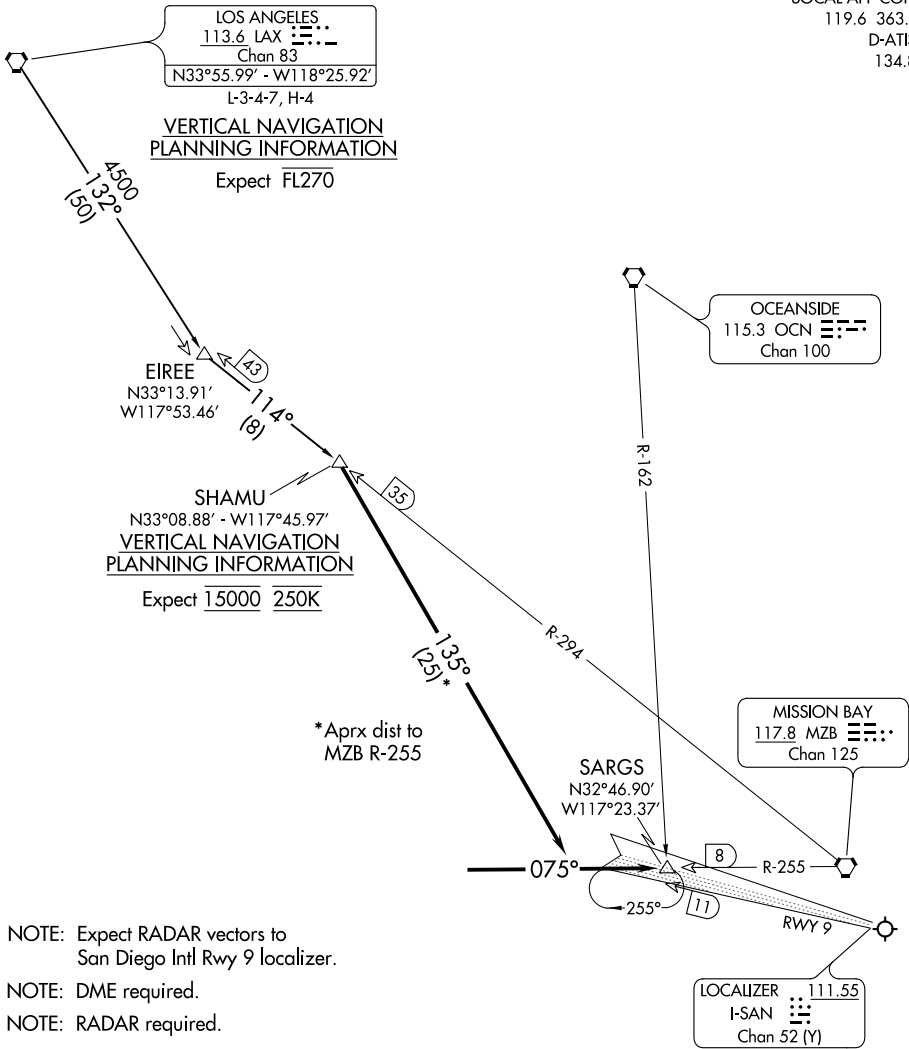


SOCAL APP CON
119.6 363.1
D-ATIS
134.8



ARRIVAL ROUTE DESCRIPTION

LOS ANGELES TRANSITION (LAX.SHAMU1): From over LAX VORTAC via LAX R-132 and MZB R-294 to SHAMU FIX. Thence. . .

. . . From over SHAMU FIX via heading 135° to intercept MZB R-255 then via MZB R-255 to SARGS INT. Expect RADAR vectors to SAN Rwy 9 localizer.