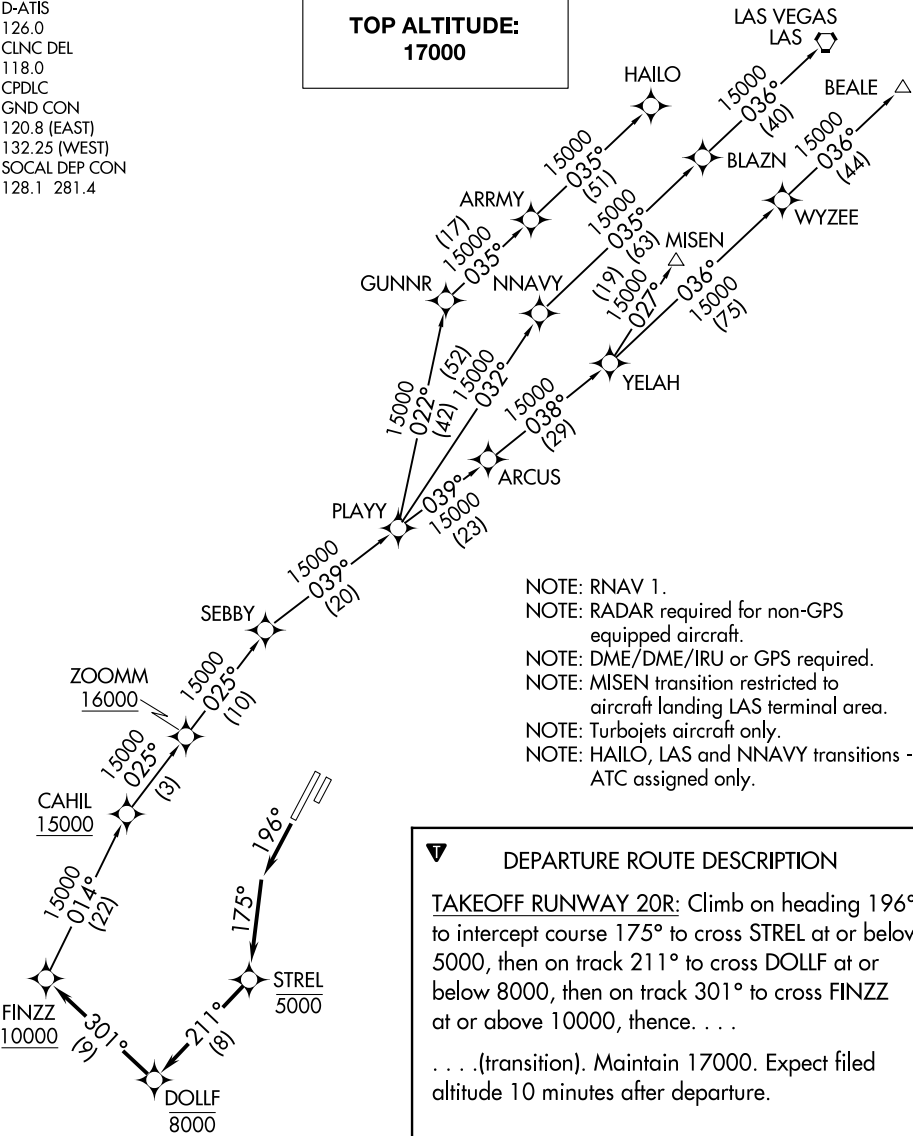


FINZZ THREE DEPARTURE (RNAV)

D-ATIS  
126.0  
CLNC DEL  
118.0  
CPDLC  
GND CON  
120.8 (EAST)  
132.25 (WEST)  
SOCAL DEP CON  
128.1 281.4

TOP ALTITUDE:  
17000



DEPARTURE ROUTE DESCRIPTION

**TAKEOFF RUNWAY 20R:** Climb on heading 196° to intercept course 175° to cross STREL at or below 5000, then on track 211° to cross DOLLF at or below 8000, then on track 301° to cross FINZZ at or above 10000, thence. . .

. . . (transition). Maintain 17000. Expect filed altitude 10 minutes after departure.

BEALE TRANSITION (FINZZ3.BEALE)

HAILO TRANSITION (FINZZ3.HAILO)

LAS VEGAS TRANSITION (FINZZ3.LAS)

MISEN TRANSITION (FINZZ3.MISEN)

NNAVY TRANSITION (FINZZ3.NNAVY)

TAKEOFF MINIMUMS

Rwy 20R: Standard with a minimum climb of 320' per NM to 560.

NOTE: Chart not to scale.