

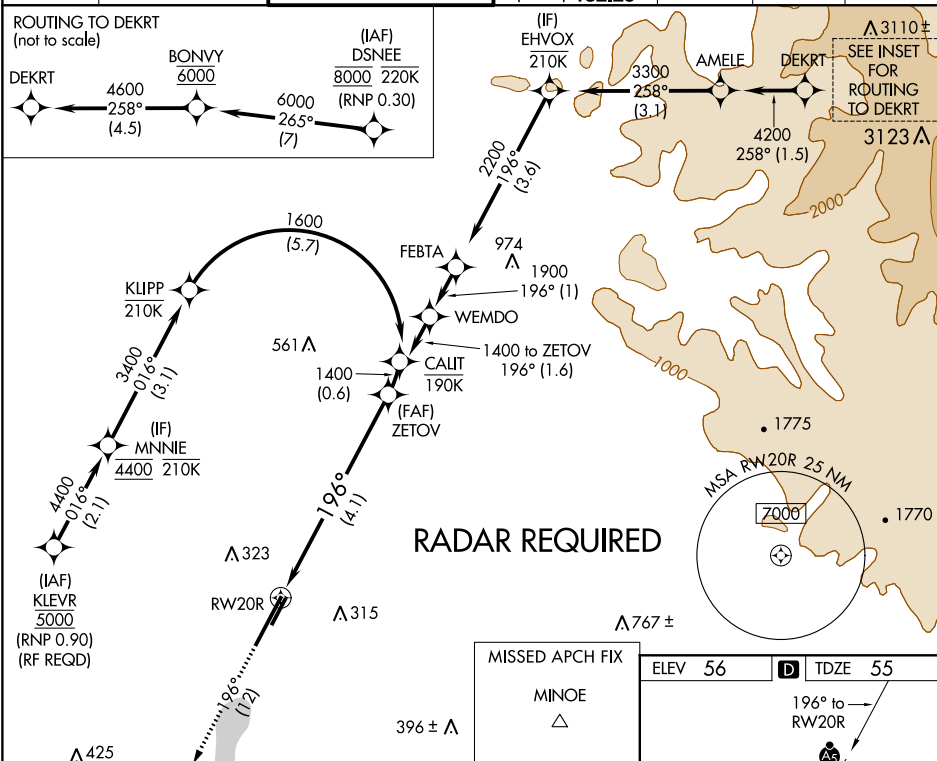


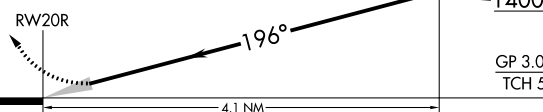
APP CRS	Rwy Idg	5701
196°	TDZE	55
	Apt Elev	56

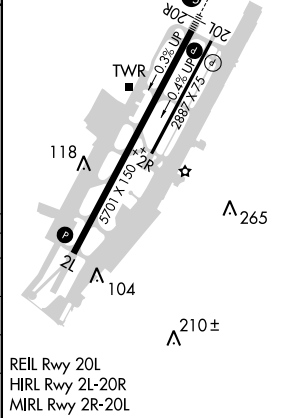
RNAV (RNP) Z RWY 20R  
JOHN WAYNE AIRPORT-ORANGE COUNTY (SNA)

 For uncompensated Baro-VNAV systems, procedure NA below 5°C (41°F) or above 54°C (130°F). GPS required.		MISSED APPROACH: Climb to 3000 on track 196° to MINOE.
---	---	--

D-ATIS 126.0	SOCAL APP CON 121.3 263.1	JOHN WAYNE TOWER ★ 126.8 (CTAF) 0 343.625	GND CON (EAST) 120.8 (WEST) 132.25	CLNC DEL 118.0	CPDLC	UNICOM 122.95
-----------------	------------------------------	--	------------------------------------	-------------------	-------	------------------



<div>3000 ↑ tr 196°</div>	<div>MINOE △</div>	<div>VGSI and RNAV glidepath not coincident (VGSI Angle 3.00/TCH 63). See planview for multiple IF locations.</div>	<div>ZETOV 1400</div>	
<div><p>RW20R</p><p>196°</p><p>4.1 NM</p><p>1400</p><p>GP 3.00° TCH 51</p></div>				
CATEGORY	A	B	C	D
RNP 0.11 DA	377/30 322 (400-5/8)			
RNP 0.15 DA	563-1¼ 508 (600-1¼)			
RNP 0.30 DA	619-1½ 564 (600-1½)			



AUTHORIZATION REQUIRED