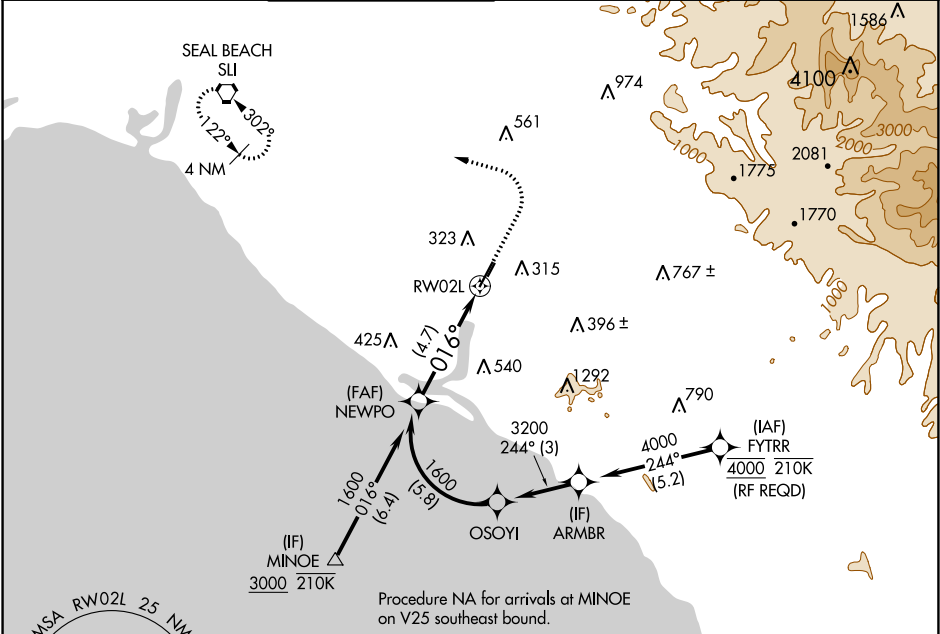


APP CRS 016°	Rwy Idg	5701
	TDZE	56
	Apt Elev	56
RNAV (RNP) Z RWY 2L		
JOHN WAYNE AIRPORT-ORANGE COUNTY (SNA)		

	For uncompensated Baro-VNAV systems, procedure NA below 5°C (41°F) or above 54°C (130°F). GPS required.	MISSED APPROACH: Climb to 800 then climbing left turn to 2600 direct SLI VORTAC and hold.

D-ATIS 126.0	SOCAL APP CON 121.3 263.1	JOHN WAYNE TOWER ★ 126.8 (CTAF) 0 343.625	GND CON (EAST) 120.8 (WEST) 132.25	CLNC DEL 118.0	CPDLC	UNICOM 122.95
------------------------	-------------------------------------	---	--	--------------------------	-------	-------------------------



ELEV 56		D TDZE 56	
REIL Rwy 20L MIRL Rwy 2R-20L HIRL Rwy 2L-20R			

VGSI and RNAV glidepath not coincident (VGSI Angle 3.00/TCH 72).

NEWPO 1600

GP 3.00° TCH 55

016°

See planview for multiple IF locations.

4.7 NM

RWY 2L

CATEGORY	A	B	C	D
RNP 0.30 DA	403-1 1/8 347 (400-1 1/8)			

AUTHORIZATION REQUIRED