

(TILTT.TILTT2) 19171

TILTT TWO ARRIVAL (RNAV)

JOHN WAYNE AIRPORT-ORANGE COUNTY (SNA)  
AL-377 (FAA) SANTA ANA, CALIFORNIA

SOCAL APP CON  
127.4 263.025  
D-ATIS  
126.0  
JOHN WAYNE TOWER ★  
126.8 343.625

ARRIVAL ROUTE DESCRIPTION

From TILTT on track 126° to ZIPRR, then on track 134° to WURLL, then on track 134° to cross TCUPS at or above FL260, then on track 109° to cross RUKKI at or above FL210 and at 280K, then on track 109° to cross BAUBB between 11000 and 14000.

LANDING RUNWAY 2L: From BAUBB on track 099° to cross JJAWS at or below 6000, then on track 092° to PUZZL, then on track 017° to cross MINOE at or above 3000 and at 210K. Expect RNAV (RNP) Z RWY 2L or vectors to final approach course.

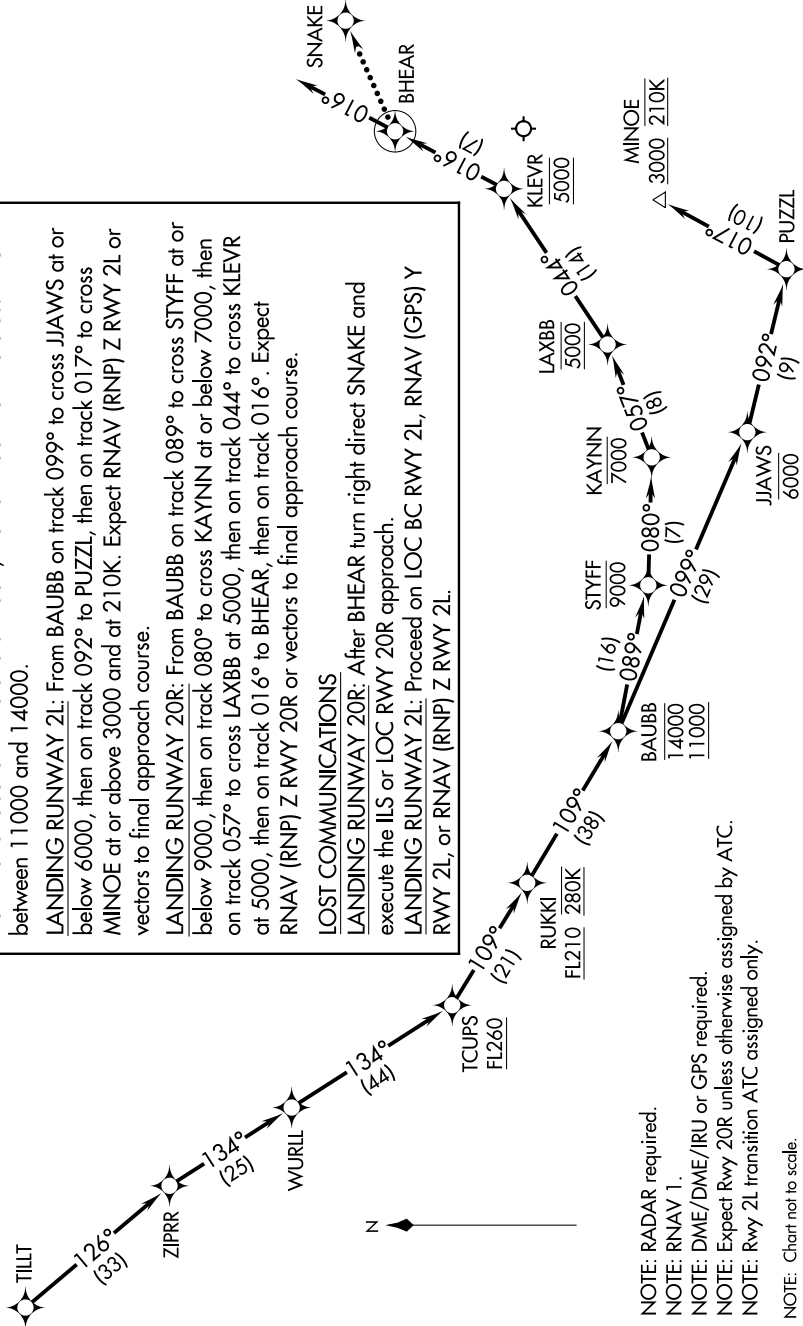
LANDING RUNWAY 20R: From BAUBB on track 089° to cross STYFF at or below 9000, then on track 080° to cross KAYNN at or below 7000, then on track 057° to cross LAXBB at 5000, then on track 044° to cross KLEVR at 5000, then on track 016° to BHEAR, then on track 016°. Expect RNAV (RNP) Z RWY 20R or vectors to final approach course.

LOST COMMUNICATIONS

LANDING RUNWAY 20R: After BHEAR turn right direct SNAKE and execute the ILS or LOC RWY 20R approach.

LANDING RUNWAY 2L: Proceed on LOC BC RWY 2L, RNAV (GPS) Y RWY 2L, or RNAV (RNP) Z RWY 2L.

NOTE: RADAR required.  
NOTE: RNAV 1.  
NOTE: DME/DME/IRU or GPS required.  
NOTE: Expect Rwy 20R unless otherwise assigned by ATC.  
NOTE: Rwy 2L transition ATC assigned only.  
NOTE: Chart not to scale.



TILTT TWO ARRIVAL (RNAV)

(TILTT.TILTT2) 120CT17

SANTA ANA, CALIFORNIA  
JOHN WAYNE AIRPORT-ORANGE COUNTY (SNA)